



[View this email in your browser](#)

Kia ora,

This month the cover picture shows Tawa local Peter Saxton, the Town Planner, who recently turned 90. His friends had a big surprise for him! Read all about it in the article further down, "Peter's picnic table," by Bill Murray.

In this edition of *Tawa News*, you'll find the latest updates from our community board, council and various community groups.

Read about a new teen mentoring programme at Tawa College, and all the details about the reunion at the college this weekend.

The *5 minutes with ...* this month is with Ian Greenwood.

If you would like to volunteer for Tawa News, we are looking for someone to coordinate the *sports* section, so get in touch if you are interested in this.

Please keep sending all your news, events and pictures to [newsletter@tawa.org.nz](mailto:newsletter@tawa.org.nz). We love seeing your stories, especially those that celebrate our local residents.

Have a good weekend from us all at the Tawa Residents' Association. Our next meeting will be on Monday June 8th, which is also the AGM meeting, at 7.30 pm at Tawa Squash Club. All welcome.

Monique

*Big thanks to WCC for continuous financial support with the Residents' Association administration costs!*



See [www.tawalink.com/newsletters.html](http://www.tawalink.com/newsletters.html) for issues before 2022.

See <https://tawa.org.nz> for recent issues.

## Mentoring Programme

### **Teen Mentoring Making a Difference in Tawa**

A well-established mentoring initiative in Tawa is continuing to make a positive impact, helping young people build confidence, friendships and a stronger sense of belonging.

Now in its third year, the School-Based Teen Mentoring Programme, run by Big Brothers Big Sisters Wellington, pairs Year 12 students from Tawa College with Year 8 students at Tawa Intermediate. The programme is designed as a two-year journey, with mentors continuing into Year 13 to support their mentees as they transition into college — offering a consistent and trusted relationship during what can be a challenging time.

Students are carefully selected by Tawa Intermediate, focusing on those who would benefit most from having a mentor and are likely to continue on to Tawa College, helping ensure the relationship can carry through both years.

Each week, mentors walk across to Tawa Intermediate to spend an hour with their mentees — chatting, playing games and simply spending time together. These regular catch-ups help build trust, confidence, and connection over time.

The programme was developed in response to feedback from both schools, who identified the move to college as a key point where students can experience uncertainty or a dip in confidence. Teachers are already seeing encouraging results, including increased confidence and engagement from those involved.

Programme Coordinator Vanessa Martin says the support from both schools has been key to its success.

“Both Tawa Intermediate and Tawa College have been incredibly supportive. Teachers are already seeing increased confidence in some of the students taking part. Having someone older who takes time out of their week just to listen and spend time with them can make a huge difference.”

As well as supporting younger students, the programme also provides valuable leadership opportunities for college students, helping them develop empathy, communication skills and a sense of responsibility.

With strong backing from both schools, the programme continues to go from strength to strength, with hopes to expand and support even more young people in the future.

Community support plays an important role in sustaining mentoring matches, and local businesses or organisations interested in getting involved are encouraged to reach out.

**To find out more or support a mentoring match:**

[wellington@bbbs.nz](mailto:wellington@bbbs.nz)



## Tawa College Reunion

### **Tawa College 65th Reunion – 1 & 2 May**

Calling all past pupils and teachers — come and celebrate 65 years of Tawa College!

#### **Friday, 1 May**

4.00pm – 9.00pm

*Meet & Greet Evening*

Tawa College Hall

#### **Saturday, 2 May**

11.00am – 2.00pm

*School Tours at the College (Free)*

**7.00pm – 11.00pm**

*Reunion Party*

Porirua Club

#### **Saturday Evening**

*Dinner for Foundation & Early Years*

Paraparaumu Beach Golf Club

Tickets: \$25 available via Eventbrite here: <https://www.eventbrite.co.nz/e/tawa-college-65th-reunion-tickets-1977162148209>

## Digital Model of Tawa

### **A Digital Model of Tawa**

Initiated three years ago, Year 13 students at Tawa College, under the guidance of Head of IT, David Foulds, and on behalf of the Tawa Technology Education Trust, have been building a digital model of Tawa.

The purpose of the model is to enable proposed housing developments to be digitally visualised and their effects on shading, wind, parking, and—most importantly—underground services to be identified.

Significant progress was made in 2025 by students Ash Milward and Levi Irvine, resulting in a workable and flexible model.

As with students in 2023 and 2024, Ash and Levi earned 10 valuable NCEA credits for their work. They were able to make major advancements as the Trust, aided by the Tawa Lions Club, provided the College with a desktop computer powerful enough to run the gaming platform *Unreal Engine*, enabling the modelling of the effects of a hypothetical two-storey, four-townhouse development in central Tawa.

Trust manager Tony Hassed is excited about the model's proposed developments in 2026 and the prospect of it becoming available to the community, developers and planners, allowing them to envisage future developments and their effects on Tawa's infrastructure.

### **Keep up the great work!**

Tony Hassed

## Peter Saxton

### **Peter's Picnic Table**

One of Tawa's best-known personalities, Peter Saxton, turned 90 on 13 April. To mark the special occasion, a group of his friends got together, raised some funds and built Peter a picnic table.

During his time as Wellington's Town Planner, and even after his retirement, Peter was instrumental in plotting and cutting many of the myriad bush tracks that surround our lovely suburb. It was therefore fitting that the picnic table be located at the top of one of these tracks.

In the lead-up to the big day, it became a game of subterfuge to ensure Peter

knew nothing about what was being planned. Even on the day of the unveiling ceremony, Peter set off to join his usual SAM (Saturday morning) walking group, oblivious to the fact that the route chosen on that particular occasion would end at the newly erected table.

In addition to those who had walked up the hill with Peter, another group of friends, who had arrived by vehicle, was waiting at the table. After the speeches, Peter was asked if he would like to say something and, for the first time in his 90 years, he was speechless.

The table, whose base is cast in concrete, is a permanent fixture and is there for anyone to use. For those interested, take the Te Ngahere-o-Tawa Track, which branches off Kiwi Crescent. At the top of this track, you will pass a swing just before crossing over Broken Hill Road. The table is in the clearing immediately across the road.



*With thanks to Bill Murray for the article and pictures.*

## Nana's Shed books

### **Local publisher releases second book for older readers**

Tawa publisher Nana's Shed Books has just released *Garbzy*, a "first chapter book" for independent readers aged 8 and up, but one that also makes a great read-aloud for younger children.

Now that the "Nana's Shed Collection" is complete, publisher Marie Munro says the business is focusing on its bilingual *Nana's Simple Science* series and books for older readers.

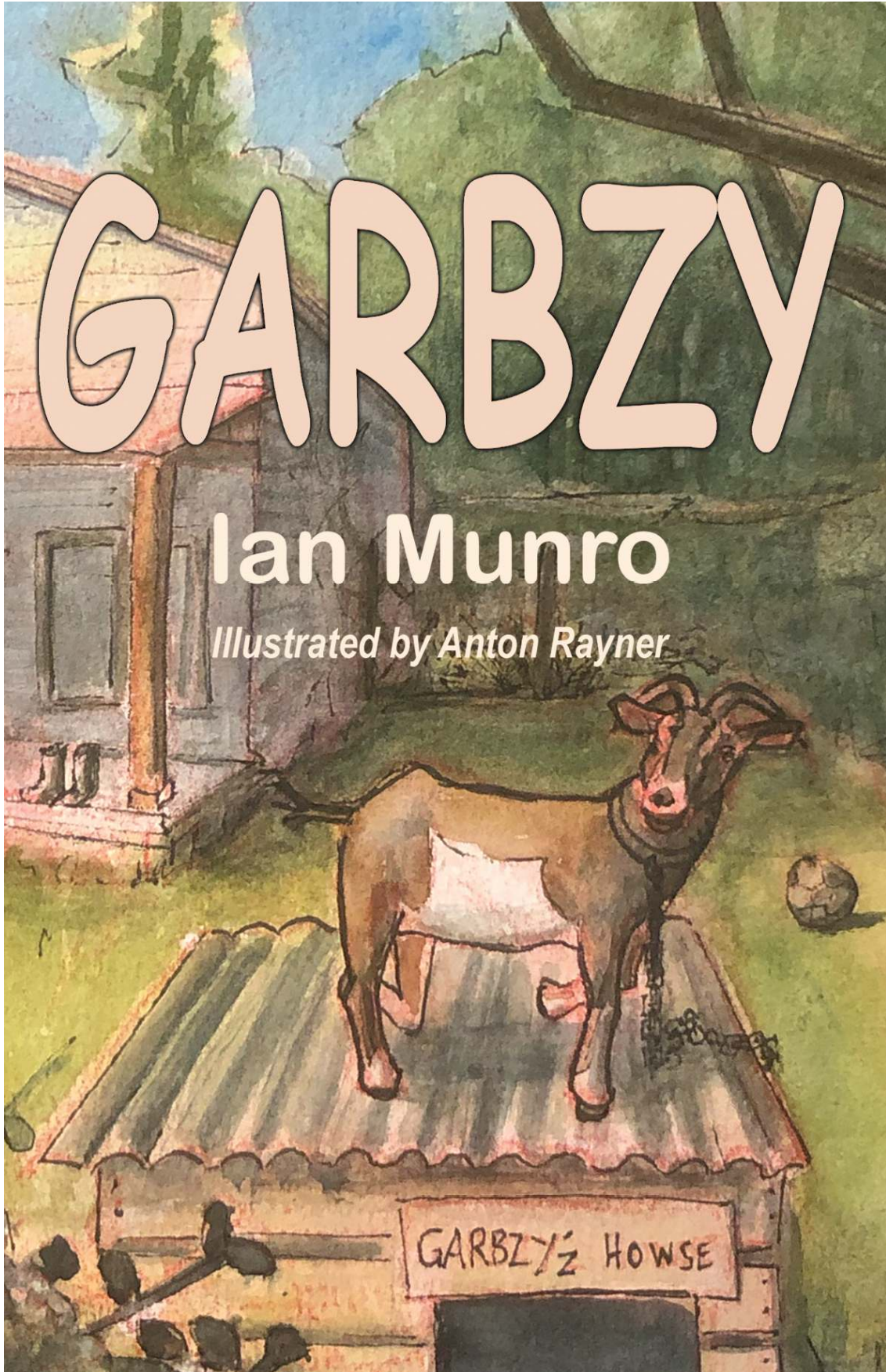
The latest book, *Garbzy*, invites young readers to see the world through the

hopeful eyes of a gentle goat who believes deeply in kindness and doing the right thing. When a careless orchard worker destroys his home, Garbzy must find a clever and unexpected way to stand up for himself. With the unwavering support of his loyal best friend, Ronnie, he learns that even the smallest voice can make a powerful difference.

Written by Ian Munro and illustrated by Anton Rayner, the story is told entirely from Garbzy's innocent perspective. Ian says the story blends gentle humour with meaningful themes that he hopes will resonate with children, parents and teachers alike.

*Garbzy* is Nana's Shed Books' thirteenth title, with three further books in progress for publication later in the year.

*Garbzy* is available locally at Tawa Books and Post and the Welly Collective store, as well as online at [www.nanasshed.co.nz](http://www.nanasshed.co.nz)



FiguredNZ

### **Free Kiwi Pay & Tax Tools Now Available Online**

A new free online resource is helping Kiwis better understand their pay, tax and KiwiSaver — without the confusion that often comes with overseas calculators.

Created by Brian Yanko, the idea came after seeing friends and family regularly

caught out by differences between their expected salary and actual take-home pay. Many online tools were either inaccurate, designed for Australia, or required sign-ups before showing results.

In response, Brian developed a set of simple, plain-English calculators tailored specifically for New Zealand users — and made them freely available to the public.

The website includes tools for:

- Take-home pay calculations
- Secondary tax codes (for those with more than one job)
- KiwiSaver projections through to retirement
- Tax refund estimates
- Contractor vs employee comparisons

There are also short, easy-to-follow guides covering PAYE, public holidays, and KiwiSaver basics.

The site is completely free to use, with no sign-up required and no personal information stored.

It's a handy resource for anyone starting a new job, changing roles or simply wanting to better understand their pay.

Find out more at: [www.figurednz.co.nz](http://www.figurednz.co.nz)

17.5%

**‘Made for my kids.  
Free for yours.’**

Plain-English Kiwi pay, tax & KiwiSaver calculators.  
[figurednz.co.nz](http://figurednz.co.nz)

YOU TAKE HOME  
**\$63,103**/year  
from \$85,000 gross

Take-home PAYE ACC KiwiSaver

## Dying Matters

### **Dying Matters Week, Save the Date September 7th-13th**

End of Life Doula and Registered Nurse Melanie Humphries-Connolly is bringing Dying Matters Week back to Wellington.

*Dying Matters Week* is all about supporting people to start conversations, learn from experts, and feel empowered to put end-of-life planning in place to bring

peace of mind to themselves and their loved ones.

Event: Dying Matters Expo - Free event

Date: September 12th

Time: 1.30-4.30pm

Venue: Tawa Community Centre Hall

Contact me: [tenderlovingeolc@gmail.com](mailto:tenderlovingeolc@gmail.com)

If you're a business, organisation or individual and would like to be part of the expo - no cost involved.

Here is a link to the Dying Matters Week website. The theme this year is Shaping Your Legacy.

<https://gowithgrace.nz/dyingmatters/wellington-events/>

## Flu Jabs

### **Strong uptake of the flu vaccination**

As the weather becomes colder, we're pleased to see a strong uptake of the flu vaccination this year. If you haven't yet been vaccinated, please consider doing so at Simon's Pharmacy or through your doctor's office.

The flu vaccine is free for individuals aged 65 and over, as well as for those with long-term health conditions. If you're unsure about your eligibility, please contact your Doctor/Nurse for advice. For those who are not eligible for a free vaccination, the cost is approximately \$38.

Vaccination is particularly important if you are attending large gatherings, such as church services, school events, or celebrations, where the risk of transmission may be higher.

In addition, please take care to stay warm during the colder months. If you are feeling unwell, it is important to stay home and rest to support your recovery and help prevent the spread of illness to others.

Piper (RN)

GOVERNANCE

From the Council

## Update from our councillors

The storm event on 20 April led to the regions' mayors declaring a state of emergency. Our southern suburbs and South Karori were significantly impacted.

The Mayor has announced a Mayoral relief fund to support our communities.

[Mayoral Relief Fund launched to support Wellingtonians affected by severe weather - News and information - Wellington City Council](#)

Please keep up to date with the latest information on the Wellington City Council website.

[Weather update and safety warnings in the Capital - News and information - Wellington City Council](#)

Your Northern Ward Councillors participated in the hearings for the potential closure of Spicer Landfill. Wellington City Council has called for the reestablishment of the Joint Committee (covering Spicer Landfill and the Waste Water Treatment facility) and is wanting a regional approach to waste.

The annual plan consultation remains open until 10 May. It is important that we hear from our community, so please submit your thoughts on our proposals. Key proposals include short term accommodation general rate, cycleways, contaminated waste fees, cremation fees, and other changes. After the first two weeks, there were over 800 submissions. [Mahere ā-tau Annual Plan 2026/27 | Let's Talk](#)

The council [is consulting on two changes to Tawa Roads](#): changes to parking on Oxford Street and the proposed pedestrian crossing over Takapu Road beside the railway bridge.

Metlink is also [consulting on proposed changes to Tawa bus services](#) as part of a wider review of bus services. Proposals include possibly ending the peak time 60e Bus Services to Johnsonville and Wellington (and back) and to merge the 402 Tawa Schools - Grenada North services with the 59 Greenacres - Tawa - Grenada North

Have a look at all the Wellington City Council projects and proposals that you can give feedback on. Find them all here: <https://www.letstalk.wellington.govt.nz>



**Absolutely Positively  
Wellington City Council**  
Me Heke Ki Pōneke

## **Tawa Community Board update:**

The Board attended the annual Tawa Anzac Service where Chair Jill Day laid a wreath on our behalf. We would like to thank the Tawa RSA for hosting another moving commemorative service, it was great to see so many of the community in attendance.

On Friday 1 May we are celebrating the opening of the Linden Public Toilets with a barbeque. This project has been a long time in the works with many people who have worked hard to make it happen, and it is very exciting to have this much needed community facility available for use. The toilets are located outside the Linden Community Centre and are available to all. The opening will almost coincide with the upgraded Duncan Park Playground next door which is nearing completion.

It is an active time for consultations. We submitted in person recently at Porirua City Council on the Spicer Landfill Consultation, and are submitting to Wellington City Council on the Takapū Road pedestrian crossing and Annual Plan, and to Greater Wellington Regional Council on the Metlink bus changes. These consultations that are still open are linked below and we encourage people to make personal submissions.

April's Board meeting is now happening on the postponed date of Monday 4 May 7pm at the Tawa Community Centre due to it originally falling on the day of the Wellington flooding and a no travel warning issued. All are welcome to attend.

<https://www.metlink.org.nz/news-and-updates/tawa-and-porirua-bus-service-review>

<https://www.letstalk.wellington.govt.nz/mahere-tau-annual-plan-202627>

Find the upcoming meetings of the board here: <https://wellington.govt.nz/your-council/meetings/committees/tawa-community-board>

Contact the board here: [tawacommunityboard@wcc.govt.nz](mailto:tawacommunityboard@wcc.govt.nz)

Please report any Spicer Landfill odour complaints on the Porirua Government website, here: [https://porirua.govt.nz/services/rubbish-and-recycling/spicer-landfill/spicer-landfill-odour/landfill-odour-complaint-form/?fbclid=IwAR3ferg\\_NetcTd31beBJd8Er73Uo4qPrb\\_B-BGlt-O83-QAcjiL0Hdy-lmo](https://porirua.govt.nz/services/rubbish-and-recycling/spicer-landfill/spicer-landfill-odour/landfill-odour-complaint-form/?fbclid=IwAR3ferg_NetcTd31beBJd8Er73Uo4qPrb_B-BGlt-O83-QAcjiL0Hdy-lmo)

If you see a water leak, please check here to find out if it has been reported yet: <https://www.wellingtonwater.co.nz/resources/maps/job-status-map/>

If it is not visible on the map, you can report the leak here: <https://services.wellington.govt.nz/report/>



## COMMUNITY SERVICES

### Tawa Business Group

#### **Last chance for our Try Tawa Autumn survey**

We would love to hear about your favourite Tawa businesses, where you've had great service and which business you've heard good things about but never been to. Our Try Tawa Autumn survey is quick and easy to complete, and feedback helps us celebrate and support our business community. You could be in with a chance to win \$100 to spend at a Tawa business of your choice.

[Be our Guest - Try Tawa \(Autumn Edition\)](#)

#### **International Food Festival**

Discover the best international flavours from Tawa's cafes, restaurants and takeaways during our first International Food Festival. Starting in early June, you'll be able to celebrate global cuisine right on your doorstep – we'll have specialty dishes, best-selling food and tasty favourites, all served from eateries right here in Tawa.

#### **Job Board**

Our job board is the place to go for all the latest vacancies in Tawa. Check it out: [Job Vacancies in Tawa](#)

## Love Local

Stay up to date with new businesses, upcoming events and chances to win prizes (including our International Food Festival promotions).

Follow us on social media:

Facebook: [www.facebook.com/tawabusiness/](http://www.facebook.com/tawabusiness/)

Instagram: [www.instagram.com/tawa\\_business\\_group/](http://www.instagram.com/tawa_business_group/)

LinkedIn: [www.linkedin.com/in/tawa-business-improvement-district-bid-87a9a0288/](http://www.linkedin.com/in/tawa-business-improvement-district-bid-87a9a0288/)



LOOKING TO TRY  
SOMETHING NEW THIS  
*Autumn*  
**Be our Guest**  
**Try Tawa!**  
TAKE OUR 5 MIN SURVEY &  
BE IN TO WIN \$100 FROM A  
BUSINESS OF YOUR  
CHOICE



[WWW.TAWABUSINESS.CO.NZ](http://WWW.TAWABUSINESS.CO.NZ)

## **Community Liaison meeting**

Did you know we hold a community liaison meeting every six weeks at the Tawa Community Centre boardroom? The meetings run from 12–1pm on Mondays, with the next one coming up on 4 May.

These meetings provide an opportunity for community leaders and others to connect and share what is happening within their groups. It is a round-table-style meeting, where everyone has a couple of minutes to speak.

## **Community Centre closed**

The Tawa Community Centre will be closed to the general public on Tuesday 5 May and will reopen on Wednesday 6 May. We apologise for any inconvenience this may cause, as it means there will be no drop-in lounge or associated services, such as our weekly soup.

## NZ Music Month at Tawa Library

May is always a month our library community look forward to as throughout May, it's OK to make some musical noise in our spaces to celebrate the now iconic NZ Music Month | Te Marama Puoro o Aotearoa. Every Saturday morning in May we will host a short community performance in the library from 11am, and this year we're excited by the variety and depth of talent from our local community:

- Sat 2 May, 11am: Maths & Music Learning Centre students perform on piano and violin.
- Sat 9 May, 11am: Voices in the Wind Choir perform their new set "Heartbreak and Harmonies".
- Sat 16 May, 11am: "Ciaccona" with librarian Corrina Connor on cello, and musical friend Katrin Eickhorst on recorders.
- Sat 23 May, 11am: Tiffany Baker plays the harp, playing everything from classical and Celtic to folk and modern.
- Sat 30 May, 11am: Joseph Robinson brings us "Songs from the Edge" - a selection of folk songs from headlands, capes and coastlines.

To complement the above, we will also run a 10-minute digital slideshow featuring 100 photographs of New Zealand musicians, set to a soundtrack of Kiwi music; created by local photographer Stella Gardiner.



Jigsaw Library

**Spotlight on the Puzzle Library**

We know many of you are aware of the Tawa Puzzle Library, which lives inside the Tawa Community Centre. But did you know that we have an extremely varied selection? Our puzzles range from tiny pieces to XL, standard 1000 piece to large 3d creations, children's puzzles of all types to a whopping 5000 piece, and include a wide variety of interests. With approximately 1400 puzzles, there is absolutely something for everyone.

Today's spotlight shows a taste of what we have to offer. Have you visited the Puzzle Library yet?



COMMUNITY ORGANISATIONS

Tawa Historical Society

### History Corner - Tawa Memorial

The Tawa Memorial, at which Tawa's Anzac Day commemorations are held, was officially unveiled nine years ago.

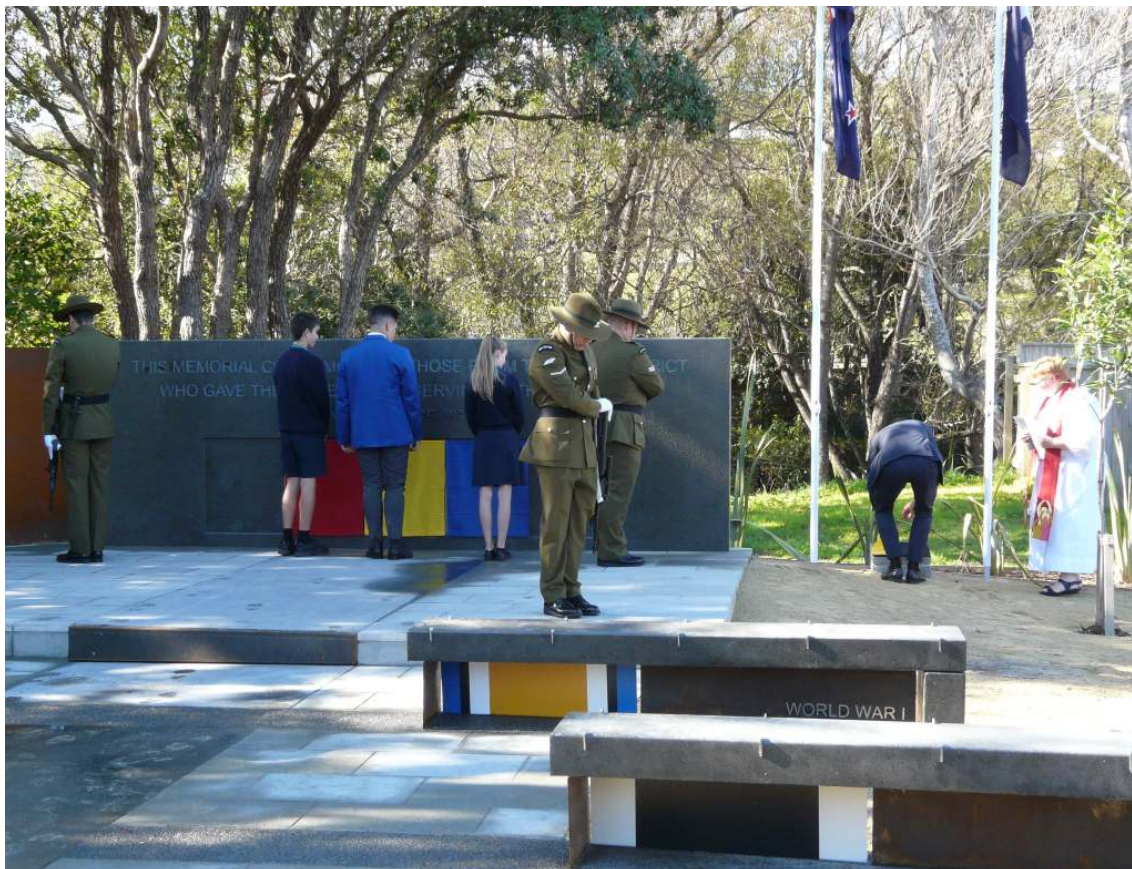
This image, which shows pupil representatives from Tawa Intermediate School and Tawa College preparing to unveil the portions of the memorial that contain the names of Tawa's war dead, was taken on Anzac Day 2017. A Defence Force honour guard is also visible in the foreground.

The memorial was established with input from the Tawa RSA and the Tawa Historical Society. A significant financial donation from the former Linden Tennis Club helped get the project over the line.

Are you interested in local history and contributing to its on-going recording and preservation? If so why not join the Tawa Historical Society? People of all ages and with a range of ancient and modern skills are needed to help keep our history alive.

Our membership application form with details of our bank account for internet banking can be found at <https://tawahistory.org.nz/membership.html>.

David Parsons, Chairman Tawa Historical Society



## Community garden

You can find the garden at Coronation Park, Oxford Street. Follow them on Facebook for updates on the working bees: <https://www.facebook.com/tawacommunitygarden>

## City Nature Challenge and upcoming events

This month KETE has been involved with City Nature Challenge - an annual global event where cities compete to see who can log the most nature observations on iNaturalist. We had a day of learning how to use the iNaturalist app to identify plants and animals around Tawa - including in the Community Garden and Willowbank Park. We researched our findings, learning what's native and even about some of the medicinal properties of plants such as kawakawa and koromiko.

## Upcoming Community Events

There are some great opportunities coming up to get involved, enjoy the outdoors, and support the local environment.

### Te Awarua o Porirua Harbour Clean Up

**When:** Wednesday 29 April, 12.00pm – 2.00pm

**Where:** Harbourside next to Kai Tahi, 20 Parumoana Street

Lend a hand to help keep our harbour clean and healthy. All equipment is provided, and there'll be a BBQ with kai afterwards.

#### What to bring:

Water bottle, comfortable clothing, and shoes (or gumboots) you don't mind getting a bit wet or dirty.

### Community Planting Days

#### When:

Saturday 9 May & Sunday 7 June

9.30am – 3.30pm (feel free to come and go)

Briefings are held at 9.30am and 12.30pm.

#### Where:

Follow Takapu Road towards the Takapu Road Substation and look out for KETE signs and flags.

Come along and be part of restoring a local wetland area — a great way to connect with others while making a positive impact.

#### What to bring:

Gumboots (recommended) or sturdy shoes you don't mind getting wet

Warm clothing and a raincoat

Hat, lunch, snacks, and water

Gardening gloves (if you have them)

Any personal medication you may need

Everyone is welcome — whether you can stay for an hour or the whole day, your help is appreciated.



## Inner Wheel

### **Fireworks Quiz Night Returns to Tawa**

It's back! The Inner Wheel Club of Tawa warmly invites the community to its popular Fireworks Quiz — a fun evening that brings people together while supporting a great local cause.

This year's event is raising funds for specialist equipment for the local Volunteer Fire Service support van, helping strengthen an important service in our community.

Gather a team of 4–6 friends, family or colleagues and get ready for a friendly challenge. Alongside the quiz there'll be plenty of entertainment, including raffle prizes, spot prizes, a lucky draw and the ever-popular wine bottle pétanque.

**When:** 24 May

**Where:** Sprig & Fern, Tawa

**Time:** Doors open 6.00pm for a 6.30pm start

Tickets are just \$12 per person. You're welcome to arrive early, grab a meal, and settle in for the evening.

This event is always a sell-out, so be sure to book early.

**Tickets:** [carolynjcrutch@gmail.com](mailto:carolynjcrutch@gmail.com)

Come along for a great night out, plenty of laughs, and the chance to support a worthwhile local cause.

## Rotary Open Evening 19 May– 6pm Linden Community Centre

Rotary Tawa is hosting an Open Evening — and everyone is welcome.

We are inviting Tawa to meet our members, hear what Rotary is doing in Tawa and enjoy an inspiring night of connection and conversation, so bring your friends, family including kids along with you.

You'll hear what's ahead for Rotary Tawa, and from two remarkable speakers with stories you won't want to miss.

This is the perfect opportunity to see who we are, and if you have ever been curious about Rotary or searching for a meaningful way to get involved in the Tawa community, this is the place to begin. Rotary thrives on people doing amazing work — and sharing amazing stories.

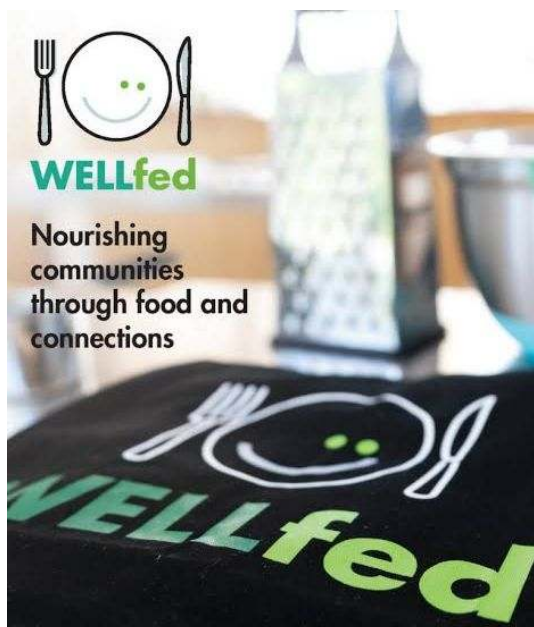
### Featured Speakers

**Rachel from [WELLfed](#)** is joining us to talk about their incredible work, the challenges people come with and how they help those whānau.

WELLfed is a community-based adult education programme in Porirua that empowers locals by teaching them how to plan, shop for, and cook healthy, low-cost meals.

**Emma Kate** creates comfort pop music from the heart of her bedroom. She's a singer-songwriter who encapsulates heartbreak & love-filled lyrics on paper, bringing an early Taylor Swift-inspired stage presence to live performances.

Emma Kate is quickly making a name for herself in New Zealand as a collaborator and songwriter, working with emerging artists and positioning herself as one of the country's next international pop superstars.





## **Tawa Rotary Book Fair Saturday 11 July - Sunday 19 July.**

Tawa Rotary is thrilled to announce the return of our epic Book Fair at the Tawa Scout Hall in Coronation Park - Oxford Street.

This isn't just a book sale; it's a celebration of stories, community spirit, and the power of giving back.

And here's the best part... Every single book is fresh stock!

All leftover books from previous fairs have already found new homes, which means this year's Bookfair is bursting with new treasures, new adventures, and new discoveries waiting just for you.

Every book you pick up helps fund local community projects, making your next great read part of something bigger — something that strengthens and uplifts the Tawa community.

Look out for a collection box at New World Tawa from mid-June.

Come for the books. Stay for the magic. Leave knowing you've made a difference.

Tawa RSA

## **Thank You**

We extend our sincere thanks to the Tawa community for your wonderful support and attendance at this year's ANZAC Day parade and memorial service.

Your presence helped create a meaningful and respectful occasion, honouring the service and sacrifice of those who have served our country. It was

heartening to see so many members of our community come together in remembrance, reflection, and unity.

A special thank you also to all those who participated, volunteered and contributed to the day's events—your efforts ensured the occasion was both memorable and fitting.

Lest we forget.

If you have served or know anyone who has then you are eligible for support from our RSA. Please email us [tawa.rsa@xtra.co.nz](mailto:tawa.rsa@xtra.co.nz) to be put in contact with one of our support officers.



## INTERESTS

### Spring into Tawa

#### **Proposed road closure for Mexted Motors Spring into Tawa - Saturday 17 October.**

We have applied for permission to close some local roads to from 5am - 6pm Saturday 17 October:

- 🚧 Main Road from the intersection with Oxford Street to the intersection with Surrey Street. This will include Elena Place, Essex Street and Rewa Terrace
- 🚧 Cambridge Street from the Main Road to the intersection with Oxford Street. Residents and businesses in this closure zone will not have vehicle access to their properties for the entire duration of the closure.

🚗 Access will be restricted to residents and church traffic only for:  
Lyndhurst Road (Main Road to Ngatitoa Street)  
Lincoln Ave (Main Road to Roy Street)

🚫 Oxford Street will be no on-street parking from 6pm Friday 16 October to 6pm Saturday 17 October to enable Oxford Street to be a detour route. Residents and businesses will still have vehicle access but will not be able to park on the street.

More information can be found on our website: <https://www.springintotawa.nz/road-closure/>

We are keen to work with you if this is going to cause issues for you - please email us at [sitnz.operations@gmail.com](mailto:sitnz.operations@gmail.com)

Have your say on the proposed road closure on Wellington City Council's Let's Talk website: <https://www.letstalk.wellington.govt.nz>

The Tawa Community Board will consider this proposed closure at their June meeting.



## Carolyn's Garden Corner

### **Feijoas and more**

The most predictable thing about the weather, especially in autumn, is that it is unpredictable.

From cyclone winds felling trees to warm, sunny days that make us start to wonder if that last swim of the season actually was the last—then back again to flooding, slips, and more wind. This autumn in Wellington, and other parts of NZ, certainly seems to be swinging from one extreme to the other.

At times like this it is hard to feel enthusiastic about getting out into the garden, but with so many jobs to be done, it is necessary to make use of every fine break we get.

I hope you time your moments better than I did on Sunday. Finally, the rain seemed to have stopped, so I dashed outside to harvest the next lot of feijoas to give away (I am sure many of you can relate).

Just as I picked up the last one, I felt the first heavy raindrop fall. As quickly as I could—though not very fast these days—I made my way up the steep back path and was totally drenched by the time I got inside.

Speaking of feijoas (do I hear a groan in the background?), they must be one of the most divisive fruits around. People seem to either love or hate them, with no middle ground.

Like lemons, feijoas seem to be a standard home garden fruit tree in Tawa. They are so abundant that one or two trees per five houses would produce enough fruit to have us all groaning, “Enough!” by the end of the season.

Can you have too much of a good thing? Plant breeders seem to think not. A few years ago, we only had one or two varieties of feijoas for the home garden. The range has now extended to include early-, mid-, and late-fruiting varieties. Wonderful news for feijoa lovers—though not so much for the haters. If you plant one of each, you could potentially be harvesting fruit from late February to early July.

Maybe this is a chance for gardening neighbours to get together and plan for each to plant a different variety, thus extending the feijoa season. Imagine that—free, fresh feijoas for almost half the year. Now there’s a thought to cheer you up on this bleak autumn day... or not?

When it comes to pruning feijoas, the standard advice is to thin the branches to let light and air in. Do this immediately after fruiting to allow new growth to form before spring.

When planting feijoas, you need to factor in how large these trees can become—2 to 5 metres—or be prepared to prune.

I have found that even when following the advice to the letter, my feijoa trees do not fruit well, or at all, in the season after pruning. I have two trees, so I prune them in alternate years. This also helps reduce the overload of fruit.

I am often asked by visitors to our garden why their feijoas have never fruited. Invariably, the trees are about 10 years old and were bought from a large chain store back when the trees were first becoming popular. Back then, we did not have the variety or production of trees that we do now. Most trees for sale were seed-grown and therefore of unknown quality. If you have one of these, it is time to dig it out and plant one of the far superior varieties we have today.

They are available in garden centres now, and the sooner they are planted, the better, so they can establish before the ground gets too wet and the

temperature too cold. Oops—might have missed the boat on that one.



*Miniature cyclamen, not much bigger than a thumb nail.*

Enough about feijoas. There are lots of other things to be getting on with.

In the vegetable garden, it is a bit too cold now for direct sowing, so plant seedlings of pak choi, tat soi, bok choi, cabbage, cauliflower, broccoli, kale, celery, spring onions, shallots, garlic, rainbow beet, spinach, peas, coriander, parsley, and broad beans.

In the flower garden, I am planting seedlings of calendula, pansies, primula, larkspur, cornflower, poppies, wallflower, viola, scabiosa, and aquilegia. These were raised from seed sown in February.

Most spring bulbs should be in the ground by now, except for tulips. These can be planted this month and into next month, but be careful to make sure the ground is not too wet. If it is soggy, you will be better to plant them in pots; otherwise, the bulbs will likely rot.

As I said, there is plenty to be getting on with, but if it is just too wet outside, there are always plenty of gardening programmes to watch on YouTube, magazines and books to read, and seed and plant catalogues to browse. It is never too late to start your wish list for next summer.

If all else fails, you could always clean your potting shed...

Happy gardening,  
Carolyn

Find Carolyn's garden on Facebook here: <https://www.facebook.com/profile.php?id=100067872369384>



*Chrysanthemums autumn blooms for fresh flowers.*

## DID YOU KNOW

### **Did you know Age Concern has been around for 50 years!**

Happy birthday to Age Concern Wellington! 50 years ago on 13 April the first ever meeting of the Wellington Old People's Welfare Council took place.

Immediately post World War II the Government encouraged local bodies to take an active role in the welfare of older people. After the Old People's Welfare Council started in Otago (1948) and then Auckland (1949), the Government asked the mayors of Christchurch and Wellington to start one also.

An organisation was founded in Wellington in 1951, but only lasted a couple of years. It wasn't until 1975 that a meeting of representatives from the Department of Social Welfare, Wellington, Hutt City and Porirua City Councils, the Citizens Advice Bureau, the Hospital Boards and various voluntary organisations agreed to establish an Old People's Welfare Council for Wellington. Almost a year later, on April 13, 1976, the Wellington Old People's Welfare Council was formally set up at a meeting at the Central Library. The name was changed to Age Concern Wellington in 1989.

From the outset the organisation has sought to work together with other not for profits, churches, local councils and the Government to improve the welfare and wellbeing of seniors across the Wellington Region, something that remains their focus exactly 50 years on.

<https://www.acwellington.org.nz>

### **Local Spotlight: Caring Grooming with Barking Mad Barbers**

This month, we'd love to shine a spotlight on local pet groomer Peter from Barking Mad Barbers, a familiar and much-loved face in our community.

Peter has been grooming our little Louie for years, always treating him with such care and patience. When Louie sadly passed away, it was a difficult time — but Peter's kindness and genuine love for animals has stayed with us. Since adopting our new dog, who doesn't require full grooming, Peter has still gone out of his way to help, making sure her nails are clipped regularly, giving her plenty of cuddles, and ensuring she always feels calm and comfortable.

Based in Tawa, Peter offers a unique, one-on-one, in-home grooming service, specialising in small to medium dog breeds. His focus is on creating a calm, loving and stress-free environment, so every dog has the best possible experience.

With a real commitment to excellence and attention to detail, Peter takes pride in every groom — and it shows.

If you're looking for someone who will treat your dog like their own, we can't recommend Peter highly enough.

#### **Get in touch with Barking Mad Barbers**

Text Peter on 027 247 2493, email: [barkingmadbarbers@gmail.com](mailto:barkingmadbarbers@gmail.com)

website: <https://barkingmadbarbers.com/contact>

<https://www.facebook.com/BarkingMadBarbers>



## SHORT NEWS AND EVENTS

### **Scuffing Mad Dancers – New Classes in Tawa**

Keen to get moving and have a bit of fun? Scuffing Mad Dancers are now running regular line dancing classes in Tawa, welcoming beginners through to intermediate dancers.

**When:**

**Fridays**

6.30pm – 7.45pm | Beginners (\$8)

8.00pm – 9.00pm | Intermediate (\$8)

Or stay for both sessions for \$10

**Sundays**

1.00pm – 3.00pm | Beginners (\$10)

**Where:**

Tawa Scout Hall

It's a relaxed and social way to get active, learn something new, and meet others in the community. Everyone is welcome — come along and give it a go! <https://www.facebook.com/groups/1431519782103285>

### **SGCNZ National Shakespeare Festival in Wellington**

The Shakespeare Globe Centre New Zealand is pleased to share details of

the **35th SGCNZ VUW National Shakespeare Festival**, coming to Wellington at the end of May.

After 23 Regional Festivals held across the motu, students from around the country will be performing at the National Festival, bringing together a wide range of scenes and interpretations of Shakespeare's work.

**When and where:**

**St James Theatre, Wellington**

**Saturday 30 May | 9.30am – 5.30pm**

**Sunday 31 May | 9.00am – 5.00pm**

The programme features a series of short 5- and 15-minute performances throughout each day. Tickets allow multiple entries, so you can come and go between scenes as it suits.

The venue is fully accessible, and a performance schedule will be available on the SGCNZ website ahead of the event.

With students (rangatahi) performing a mix of classic and modern takes on Shakespeare, it's a good opportunity to see some of the talent coming through from across Aotearoa.

Discounts are available for concessions and groups.

**More information and tickets:**

<https://www.universe.com/events/sgcnz-victoria-university-of-wellington-national-shakespeare-festival-tickets-24RDNP?ref=universe-discover>

5 MINUTES WITH



**Five minutes with** Ian Greenwood who has lived in Tawa for 66 years and was instrumental in the establishment of Tawa's own swimming pool back in the 1970's when Tawa was still a borough in its own right.

**Where were you born?**

Wellington.

**Where did you grow up?**

Berhampore for the first four years and then Miramar.

**Where were you educated?**

Miramar South Primary School, Rongotai College.

**In what towns/cities have you lived over the years?**

Wellington and Tawa.

**How long have you lived in Tawa?**

66 years

**What about family?**

I married Carole in 1959, and we moved to Tawa that year, welcoming son Dean in 1962, daughter Diane in 1964 and daughter Karyn in 1972.

**Work experience over the years:**

When I left school I took on a cabinetmaker apprenticeship and worked in the trade for 17 years.

I then became a customs broker from the late 1960s, moving into management over time and eventually becoming a director in the last years of my career. The company I worked for grew with different ownership over those years.

I was also involved with the NZ Export Institute, on the board for several years and president for a period of time.

**What do you like about Tawa?**

I like the compact community where people know each other and work together as a community. The community started with very little, it was a borough and had its own council and then it became part of Wellington. Our neighbourhood worked together, sharing the concrete mixer and other tools, helping each other to establish homes and support families with young children.

It has a real sense of community over the years. A lot of things were built by the community, like the pool, the kindergartens and neighbourhoods. Working together, fundraising, supporting schools, working towards the cause together.

It's a nice community to live in still, still a community atmosphere. The fact it's in a small area where people can still connect is important.

**What would you like to see improved in Tawa?**

Maintenance of regular transport services to support people to travel to the main centre from around Tawa.

**What are your interests and hobbies?**

Spending time with family.

Exercise group Steady as You Go in Tawa, and PAI (Porirua Aging Inspirations) in Porirua.

Current affairs, encouraging reduction of harm in our community from alcohol, early childhood education, surf lifesaving, swimming for everyone.

**Favourite sports team and/or sports person?**

No favourites.

**Favourite musical group and/or individual singer?**

Andrea Bocelli, Solo Mio, Neil Diamond. I like most popular music, classical music through to pop.

**What is your favourite holiday destination in New Zealand?**

Te Rangi Iti, Tāupo and Ohope Beach.

**What accomplishments/ achievements in your life give you the most satisfaction/pride?**

Raising a family with my dear wife, Carole and watching them flourish.

Contributing to development of kindergartens and schools in the area, contributing to surf lifesaving and contributing to fundraising for Tawa Pool and swimming.

Accompanying the first person to swim Cook Strait, Barrie Devonport.

Developing a process that improved customer relationships with government departments such as Customs and Trade and Industry related to importing and exporting.

**What are two or three interesting things about you that local people may not know?**

The creation of TOPA 'Tawa's own pool appeal' at a time when there was concern about establishing a levy on ratepayers to fund a pool.

A survey was undertaken in the early 1970's. It showed 82% of people in Tawa wanted a pool but when it was suggested that a levy be applied to the rates of \$5 a year for 5 years, it went to a community vote and resulted in a narrow margin in favour. To help overcome the feelings that had arisen regarding the levy I suggested the creation of TOPA Tawa's own pool appeal, which became represented by a friendly dolphin called TOPA. It was Peter Bradshaw, a resident of Tawa at the time, who created the dolphin for us. TOPA wore a top hat, and was a full-size polystyrene dolphin which a person could wear and move around the community at fundraisers. TOPA lived in our basement between events. TOPA raised funds that contributed to the pool.

Pulling the lever that fired a 6-inch gun off Palmer Head during my time in compulsory military service. It was an amazing experience; I was a member of a team of six loading and operating this giant gun which had been set up at Palmer Head to protect Wellington Harbour during World War II. The barrel was at least 20 feet long. When I pulled the lever, the gun recoiled back between use in the team and smoke went everywhere.

**What are two or three things you would like to do in the next 5-10 years?**

Live as long as I can.

Continue to spend regular time with my family and friends.

Continue to be active as much as I can and spend time at Te Rangi Ita, Taupo with family.

**Anything else you would like to add?**

Nobody achieves things in life solely on their own, and in my case I always had the support of my wife Carole, who was the wind beneath my wings.

I've attached a photo of myself with Carole as I feel we accomplished life together, 65 years of marriage.



## NEXT TRA MEETING

The Tawa Residents' Association's monthly meetings are open to the public. Feel free to come along. We are always open to new people joining the committee, helping out, or sharing ideas.

We meet upstairs at the Tawa Squash Club on the second Monday every other month, at 7.30 p.m. The next meeting is June 8, which is also the AGM meeting.

We look forward to meeting you!



Monique  
The Tawa Residents' Association

---

This email was sent to [chris@owdjim.gen.nz](mailto:chris@owdjim.gen.nz)

[why did I get this?](#) [unsubscribe from this list](#) [update subscription preferences](#)

Tawa Residents' Association · 37 Greyfriars Crescent · Tawa · Wellington, Wellington 5028 · New Zealand