



[View this email in your browser](#)

Kia ora,

The cover picture this month is from one of two local Tawa College alumni groups, read more about these in the *Did you know?* section.

In this newsletter you will find information on the upcoming Anzac Day, updates from our council, and news from the Tawa community board.

Of course we have the regular book, history and garden corners, as well as a *5 minutes with Jane*.

Please keep sending all your news, events and pictures to [newsletter@tawa.org.nz](mailto:newsletter@tawa.org.nz)! We love seeing your stories, especially stories that celebrate our local residents!

We hope you will enjoy reading about all the good stuff that is happening in our vibrant community.

Have a good Easter weekend from us all at the Tawa Residents' Association. Our next meeting will be on Monday 8th April, 7.30pm at Tawa Squash Club. All welcome!

Monique

Big thanks to WCC for continuous financial support with the Residents' Association administration costs!



Share



Tweet



Forward

See <https://tawa.org.nz> for recent issues.

## ANZAC DAY

### **Anzac Day observance Thursday 25 April 2024**

This year's Tawa Community ANZAC Day observance will commence with a parade, which will assemble in the New World car park at 9.30 am and march off to the Tawa RSA at 9.45 am.

The parade will be led by the Red Hackle Highland Pipe Band and will also include representatives from the NZ Defence Force, NZ Police, NZ Fire Services, Tawa College, and local youth groups.

The ANZAC Civic Service will be held at the Grasslees Reserve Memorial, 118 Oxford Street. If the weather is wet, there will be no parade and the service will be held in the Tawa RSA Hall, 89 Oxford Street after the parade (approximately 10 am).

This is a Tawa community commemoration, and the public is most welcome to march in the parade, attend the service, and pay tribute on this special day of remembrance.

## COMMUNITY GARDEN TEN YEARS

### **Our Tawa Community garden is 10 years old this year!**

You can find the garden at Coronation Park in Oxford Street, Tawa.

We are celebrating our 10th anniversary with a barbeque at midday on 28th April. We are participating in Wellington Council's Open Garden Scheme on the same day and will be welcoming visitors from 10.00 am to 3.00 pm.

Gardening sessions in April are from 1.30 to 3.00 pm on the 7th, 13th, 21st, and 28th of April, all are welcome.

The garden's crops have not thrived over the last 3 months due to too much wind and not enough rain. Watering by hose is never as efficient as several hours of light rain.

Carrots and beetroot have failed. Strawberries and zucchinis grew well with plenty of fruit. Pumpkin plants have spread over 2 large beds and produced well.

Everyone is welcome to assist with the garden.

Alison Bayly Find the garden on Facebook here: <https://www.facebook.com/tawacommunitygarden>



## NEIGHBOURHOOD BBQ

### March Street BBQs

Duval Grove had their street BBQ recently. It was great to see newer and longer-term residents come along to get to know their neighbours.

Street BBQs in Tawa originally started about a decade ago with our then local Councillor Malcolm Sparrow promoting resilience amongst neighbourhoods in the event of a natural disaster. Also in conjunction with Neighbours Aotearoa <https://neighboursaotearoa.nz/>

Pre-covid up to 50 Tawa streets participated. Little did we know that the first natural disaster that might come along was COVID. So post-covid we hope this will continue once again as an annual event.

If you missed having a street BBQ this year, just get ready to organise one next year!



*With thanks to Richard Herbert.*

## JIGSAW LIBRARY 1000 PUZZLES

**The jigsaw library at the Tawa Community Centre recently received its 1000th jigsaw puzzle!**

Luckily all 1000 boxes are not at the centre and most are out in the community being enjoyed by many people!

The volunteers are doing a great job helping out every Thursday morning from 10-12. They can help tell you, if it is your first time at the jigsaw library, help you find a good jigsaw and they are also keeping the room tidy. They also meet up regularly for a morning tea.

The doors have come off the big cupboards making the the fantasy and 2000+ pieces puzzles more accessible.

There is a demand for XL pieces puzzles, and if you have any lying around, we happily receive these. The jigsaw library is open when the community centre is open. There are also jigsaws for children available.



## SKYE THREE YEARS!

Three years have passed since Skye Candle and Body Care opened in Tawa! Congratulations to owner Kash Harvey and her team!

Kash began crafting candles and wax melts as a hobby when she was pregnant with her daughter Skye in 2016. After three months she decided that she wanted to be a stay-at-home mum and started her business when she was eight months pregnant.

Website: <https://www.skyecandleandbodycare.co.nz>

Find Skye on facebook here: <https://www.facebook.com/skyecandleandbodycare>



## HISTORY CORNER

centred around the War Memorial at the north end of Oxford Street and the nearby RSA facility.

The War Memorial was unveiled and dedicated in April 2017. The accompanying photograph shows the memorial shortly before it was unveiled at the ceremony. The three sections under the flags record the names of residents of the Tawa District who died in the service of the New Zealand Armed Forces during the South Africa War, the First World War, or the Second World War. Thirteen names are recorded.

Nearby are two other memorials. One, a rock with a brass plaque attached, commemorates the end of the First World War in 1918. This memorial was originally located in Willowbank Park in 1993 on the 75th anniversary of the end of hostilities. It was moved to its current site in 2017. The other commemorates the life of Elsdon Best, born in Tawa Flat, and a notable ethnologist in later life. Fluent in te reo, he was influential in developing a greater understanding of pre-European history in the area. Three volumes of his writings have been re-published by the Tawa Historical Society.

David Parsons

Chairman Tawa Historical Society



**TAWA COMMUNITY BOARD**

It's been a busy month for the Community Board with plenty to keep an eye on

- We have followed up on residents' concerns about the forestry work happening above Collins Ave. Residents are keen to be reassured that the appropriate measures are being taken to ensure the site is being monitored and that slash is being managed properly. We know that slash has had devastating effects on communities around the country and are keen to make sure that we are not subjected to those risks. The Community Board requested that Council staff visit the forestry site. This has occurred and WCC staff reported that they observed good overall practice. Some suggestions have been made including the identification of some very minor improvements to erosion sediment controls. There is still more work to be done with removing trees and the Board will continue to work with Council to ensure that the good practice continues.
- The Board made an oral submission to Wellington City Council regarding the Long Term Plan and our concerns about changes to the pool and library hours in Tawa and the introduction of paid parking. The proposals around the pool and library have been withdrawn, however, the proposal to charge for parking in the central shopping area in Tawa has not. We encourage residents to share feedback on this with WCC. The consultation for this opens on the 12th of April and closes on the 12th of May.

WCC: *"The proposed restrictions will be advertised in The Dominion Post and on [Let's Talk | Wellington City Council](#) 9.00 am Thursday 28 March. The consultation period will remain open until 5.00 pm Sunday 14 April. "*

More information about what is proposed can be found here: <https://www.letstalk.wellington.govt.nz/hub-page/long-term-plan-2024-34>

- Safety improvements to the roundabout at Main Road/Lyndhurst Road/Cambridge Street (proposal attached). Following very mixed community feedback on a recent proposal to improve pedestrian access at this roundabout, Council staff have spent some time reflecting on the feedback and consulting with the Tawa Fire Brigade. We acknowledge that change can be challenging, but that there is a need to make sure that our streets are safe for all road users. People who travel through this intersection in the morning and afternoon before and after school will know how challenging it can be for pedestrians (particularly younger members of our community) to navigate crossing at this roundabout. We do encourage you to have a look at the new proposal and provide your feedback to the Council by 14th April. The new proposal has two rather than four pedestrian crossings and the crossings are set back further from the roundabout to help with traffic flow around the roundabout. No car parks will be lost with this proposal.
- There are also two proposals for EV charging places at Gee Street and Mckeefry Gr (proposals attached). Do you think that these locations will work locally? We encourage you to share your feedback with Wellington City Council.

Contact the board here: [tawacommunityboard@wcc.govt.nz](mailto:tawacommunityboard@wcc.govt.nz)

Please report any Spicer Landfill odour complaints on the Porirua Government website, here: [https://porirua.govt.nz/services/rubbish-and-recycling/spicer-landfill/spicer-landfill-odour/landfill-odour-complaint-form/?fbclid=IwAR3ferg\\_NetcTd31beBJd8Er73Uo4qPrb\\_B-BGlt-O83-QAcjL0Hdy-Imo](https://porirua.govt.nz/services/rubbish-and-recycling/spicer-landfill/spicer-landfill-odour/landfill-odour-complaint-form/?fbclid=IwAR3ferg_NetcTd31beBJd8Er73Uo4qPrb_B-BGlt-O83-QAcjL0Hdy-Imo)

If you see a water leak, please check here to find out if it has been reported yet: <https://www.wellingtonwater.co.nz/resources/maps/job-status-map/>

If it is not visible on the map, you can report the leak here: <https://services.wellington.govt.nz/report/>

## FROM THE COUNCIL

### Proposed District Plan Decisions

Over the past year, WCC Officers and an Independent Hearing Panel (IHP) have developed and heard submissions to a new District Plan (DP). This includes rules on where High-Density Housing (i.e. up to six storeys) should go, building recession planes to ensure neighbouring properties retain some access to the sun, and rules on where on a property a building can be built.

Last week the council reviewed the IHP recommendations for the new DP rules. Most of the recommended rules were accepted but a majority of councillors passed some alternative DP rules. Tawa is significantly affected by two of the alternative DP rules:

- The IHP recommends 5-minute walking catchments around three Tawa railway stations while a majority of Councillors propose that ALL stations have a 10-minute walking catchment. The council proposal will permit high density housing across Tawa according to the map below.
- The IHP agreed with WCC Officer advice that "Boundary Setbacks" are required. A majority of Councillors propose that no Boundary Setbacks are required at the front and side of properties (i.e. owners can build right up to the boundary as of right).

The final step for the new District Plan is to have Minister Bishop choose between the IHP recommended rule and the alternative council recommended rule which will happen in the next few months.

In other news, the draft Long-Term Plan has been finalised and will be put to public consultation from 12th April. You can submit on the plan from then until 12th May with oral hearings held shortly after this. We encourage you to have your say on key issues in the plan including the proposal to have paid metered

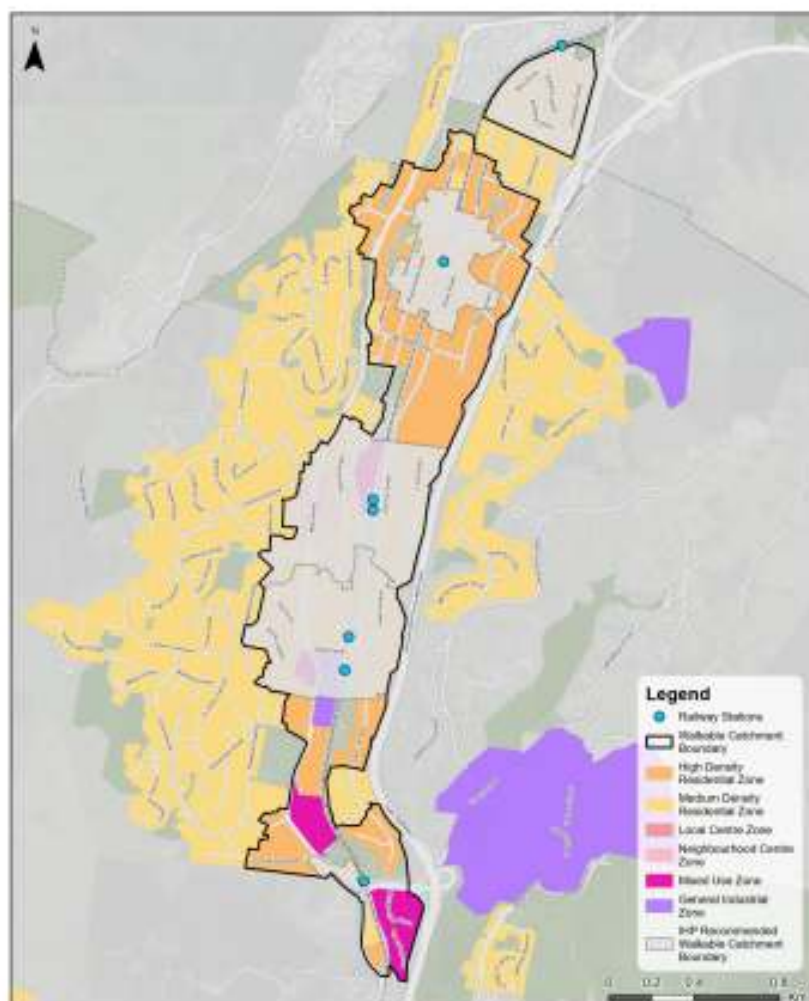


more are to be funded by a 16.4% Rates increase (with another 0.4% for the Sludge Treatment Plant Levy on top).

Based on community feedback, the Council has refined its plan to make the Main Road/Lyndhurst/Cambridge roundabout safer. Two pedestrian crossings are now proposed (down from four) and this Traffic Resolution will shortly be made public for you to have feedback on it.

Finally, as a reminder, the "Fixit" App is available report any problems to Wellington City Council (Fixit - Wellington City Council). Feel free to get in touch with either of us if you're having any issues dealing with council ([tony.randle@wcc.govt.nz](mailto:tony.randle@wcc.govt.nz) / [ben.mcNulty@wcc.govt.nz](mailto:ben.mcNulty@wcc.govt.nz)).

Ben, Tony and John



**Map B: The Kapiti Train Line and 10 minute walkable catchments from its stations in the Tawa Suburb**

Date: 13/03/2024  
Credit: City Insights GIS Team

Basemap credits: Eagle Technology, Land Information New Zealand, GEBOD, Community maps contributors, LINZ, Stats NZ, Earth.Terrain, Garmin, Protopopos, MET/NASA, USGS

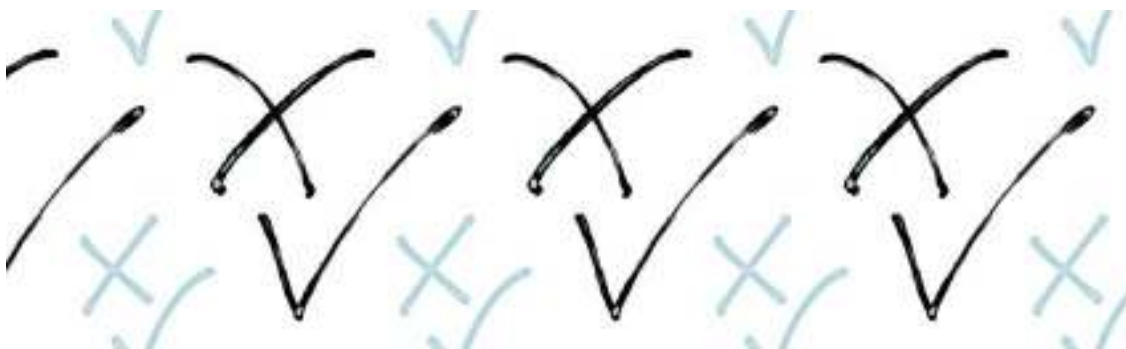
**Absolutely Positively  
Wellington City Council**  
He Kōwhiri ki Te Kōwhiri

**HAVE YOUR SAY**

Have a look at all the Wellington City Council projects and proposals that you

Wellington City Council would like to hear your thoughts about the review of the current Water Services Bylaw ([Part 8: Water Services](#) of the Wellington City Consolidated Bylaw). The Water Services Bylaw is a regulatory tool that addresses some key water services issues that are not sufficiently covered by other regulations or legislation.

Public consultation is now open and will close at midday on Monday, 15 April 2024.



## CAROLYN'S GARDEN CORNER

When the low slanting rays of golden light set the garden ablaze you know autumn has arrived. When I was younger I used to seriously dislike this season, seeing it only as a precursor to a long wet and cold winter. As a gardener, it is one of the most exciting and busiest times of the year. We share visions of tulips poking their heads above swathes of forget me nots, clumps of daffodils shining like beacons, and bluebells creating a misty haze under trees tipped with fresh chartreuse leaves.

If this sounds like the garden you dream of it is possible but you had better get those bulb orders in quickly as popular varieties are selling out fast.

When deciding where to plant your bulbs consider what their supporting cast will be, those plants that will surround them with fresh spring green/bronze leaves or early blooms. Generally, these plants will begin the show and continue on when the bulb blooms fade so it is worth taking time to consider possible combinations.

The primulaceae genus offers a wonderful array of spring flowering plants which I use in my garden to provide a colourful foundation to our many bulbs. Examples are fairy primulas (malacoides) in shades of pink, white, and lavender, polyanthus in more vibrant hues, and primula obconica which includes reds and blues. Violas, including the ubiquitous pansies, also come in a range of shades from pastels to brights. Calendulas and cinerarias are great additions to the spring flower display but are a little large for overplanting bulbs.



March/April is also prime seed sowing time as the temperatures are still generally warm enough to break seed dormancy and get plants off to a good start. Make sure to use fresh seed raising mix, I prefer Yates black magic, clean trays, and strictly follow instructions as to sowing depth and conditions. Not all are the same.

Some seeds are very fine and are sprinkled on the surface whereas larger seeds may need to be covered by 1cm+ of mix. Some require to be in complete darkness whereas others need bright light.

Rather than watering from overhead, before sowing, sit the trays in a larger tray of water and allow the mix to soak it up. This ensures the medium is fully saturated and not just wet on top.

This can be repeated for a brief time if the mix is starting to dry out after sowing the seeds. Make sure to keep the lip of the tray above the water level so as not to flood the seed bed and thus wash the seeds away.

There is a large difference in germination time between varieties so don't be too quick to give up and toss out the trays. If the blank trays are upsetting you just move them aside where they won't dry out, check them every once in a while and they may surprise you.

In my garden, as I write this Dahlias, Rudbeckias and Michaelmas daisies (*Symphiotrichum* aka Asters) are the stars of our flower gardens.

Autumn is typically the time of great harvests in the vegetable garden but sadly this is not the case for my garden this year. The tomatoes got off to a rough start with the cold spring last year. Although they put on a bit of growth in January/February it was too little too late for them to be any good this season. The same goes for zucchini which fared slightly better but now the sun has moved away from our vegetable beds powdery mildew has set in and the end is nigh.

Finishing on a positive edible note, we have had fantastic lettuces all Summer.

<https://www.facebook.com/profile.php?id=100067872369384>



## KETE UPDATE

### **A fantastic way to start the year for Kids Enhancing Tawa Ecosystems**

We have had a record number of applicants this year for our Kids Enhancing Tawa Ecosystems (KETE) Student Leadership Team, demonstrating the keenness of local students to get involved in caring for te taiao in Tawa. As a result, we now have both a Senior and Junior Leadership team who will meet regularly to work together and plan actions to make a difference in our local area.

Each school in Tawa is represented in these teams whose members will be learning new environmental, communication and leadership skills this year and growing in their understanding and appreciation for Aotearoa New Zealand's unique flora and fauna.

A major focus for the KETE student leaders this year is helping to restore the mauri of Te Kenepuru (Porirua) Stream and to help monitor the stream's health as Citizen Scientists.



Anticipation was high as the Senior team gathered at Grasslees Reserve and later at Tawa Junction to get some training in freshwater monitoring from Mountains to Sea Wellington. Our students learnt how to measure various parameters such as clarity, temperature, and flow as indicators of stream health, and also sampled the macro invertebrates in each of the two areas. We used the iNaturalist app to help us identify and record these species.

A highlight was seeing some young tuna (eels) and hearing about their journey upstream. Not surprisingly, the students found differences in the types and numbers of macro invertebrate species between the two areas. Just goes to show how important the planting along the stream is for keeping it healthy! We had a load of fun and everyone is keen for our next outing.

## FRIENDS OF TAWA BUSH RESERVES

### Winter planting season

We are planning for our annual winter tree planting programme and would welcome inquiries from any community or corporate volunteer groups that would be interested in assisting us with tree planting over the winter. Please contact Richard, [herbert.r@xtra.co.nz](mailto:herbert.r@xtra.co.nz), 0274455942 to discuss further.



## BOOK CORNER

While rearranging the shelves, a much-loved childhood series grabbed my attention - The Choose Your Own Adventure series, with the reader choosing the path, one book had many stories to tell.

Wondering what the authors own stories were, I asked Google, finding an interesting 2022 article in The New Yorker about the authors, their families, and the series. One part called Cheating brought a huge smile to my face, as it was something I had enjoyed, finding a great ending, and working backward.

<https://www.newyorker.com/magazine/2022/09/19/the-enduring-allure-of-choose-your-own-adventure-books>

Another '80s series back on our shelves is Lone Wolf, an interactive solo gamebook, taking place in a world called Magnamund. Developed by author Joe Dever and first published with illustrator Gary Chalk in 1984, this year his son Ben and co-author Vincent Lazzari are working on the final book for the 40th anniversary.

<https://www.magnamund.com/#gamebook>

Today, there is a wealth of different styles of choosing your own story, including a wonderful picture book series called Pick a Story, BookTrust UK writing;

“Pick a Story are tonnes of fun and can also support speech and language development, encourage independent thinking and introduce children to decision-making”

With a holiday on the horizon, it seems the perfect opportunity to relive my childhood and see how many crazy adventures I can have all in one book. From Rowena

<https://www.tawabooksandpost.co.nz> <http://www.tawabooksandpost.co.nz/collections/book-corner>



## TAWA BID

Work is well underway for our new website and plenty of professional photos were taken recently, as well as some cheeky behind-the-scenes photos. Watch this space for launch day.

AK Osteopaths has recently moved from Petone to Tawa and can be found at 137 Main Road, Tawa. If you're looking for someone to help with those aches and pains, call 027 586 7660.

The job board is updated every week with new vacancies within various businesses and organisations throughout Tawa. If you're looking for a change or a new challenge, check it out: <https://www.tawabusiness.co.nz/jobs>

Follow us on Facebook or Instagram for all the latest updates on new businesses in Tawa, special events and useful Tawa-based information. You can find the Tawa Business Group on Facebook here: <https://www.facebook.com/tawabusiness> and on Instagram here: <https://www.instagram.com/tawabid/>



## PEST FREE TAWA

Seen a rat...

Heard a possum...

Witnessed a stoat...

Don't worry Pest Free Tawa has got your back!

Our community led backyard trapping group is helping to rid Tawa of rodents, possums, stoats, and weasels.

Our traps are child and pet friendly and over 700 households are involved with this mahi! Our volunteer team can deliver a trap, teach you how to use the trap and where to set it.

All you need to do is send us an email with your name and address and we'll help you out! [pftawa@gmail.com](mailto:pftawa@gmail.com)

Ngā mihi nui, Pest Free Tawa

Follow us on Facebook for more <https://www.facebook.com/pestfreetawa>



## TAWA COMMUNITY CENTRE

**Nohinohi Reorua, our bilingual te reo Māori/reo Pākehā storytime** sessions are back again on the last Wednesday of every month, 11 am-12 pm, here at Tawa CC. The session is full of pukapuka (books), waiata (singing), and kanikani (dancing) and is aimed at tamariki aged 2-6 and their caregivers. All are welcome, regardless of where you and your tamariki are on your te reo Māori journeys. The next session is Wednesday 24th April, 11 am-12 pm, here at Tawa Community Centre.

**Have you got your will and enduring powers of attorney (EPA) documents sorted?** The start of the year is a great time to tick these important documents off. This year, we've joined up with Public Trust Kapiti to offer in-person appointments at the Tawa Community Centre during April, May, June, and July.

You can book an in-person appointment with Alfonsa Vetter, Senior Trustee by visiting <https://www.publictrust.co.nz/locations/> (Select the Wellington region then select the Tawa (by appointment only) option)

The dates the appointments are available are:

Wednesday 17 April 9:30 am – 4 pm

Thursday 16th May 10 am-4 pm

Thursday 13th June 10 am-4 pm

Thursday 18th July 10 am-4 pm



people that matter. Alternatively, phone 0800 371 471 to discuss your appointment needs further.

**School holidays at Tawa CC!** We've got some exciting things in the works for the school holidays, including a scavenger hunt, LEGO, and Beebots robots! Keep an eye on our Facebook page for more information. <https://www.facebook.com/TawaCommunityCentre>

## TAWA LIBRARY

### Amazing displays

You might have noticed the amazing displays that the library team sets up regularly in various places. The latest two are for Ramadan and Neighbour's Day. These displays are set up to promote the library collection that ties in with special events in the community. In the past, we have had Christmas, crafts, Spring into Tawa, Senior's Week, Bees and many more. Next time you visit, take a look at what is on display.

A lot of the wooden design objects were laser cut by 'The Hive' (Makerspace at the Johnsonville Library). The books that are on display with the artwork and creative designs are free to borrow for three weeks, with an option to renew free of charge for an additional three weeks. These displays change every fortnight, so there is always something fresh to look forward to.



## TAWA PROBUS

Aimed at bringing Fun, Friendship, and Fellowship to those in Retirement (or semi-retirement). Tawa Probus meets monthly on 3rd Monday at the Tawa Bowling Club, and the speaker for its April meeting is Diane Stephens from Parkinson's NZ.

## TAWA MENZSHED

### Winter Firewood For Sale

The days are getting shorter and temperatures are getting lower. Time to top-up your wood supplies for winter fires to keep you warm. As a community fundraising project, the Tawa MenzShed is offering for-sale banana boxes of firewood comprising cutup pallets @ \$10 / box (delivered within Tawa). Please contact Richard, [herbert.r@xtra.co.nz](mailto:herbert.r@xtra.co.nz), 0274455942 to arrange.



## TAWA ROTARY CLUB

### What's coming up:

2 April: Rosemary Escott, Charge Nurse Neonatal ICU.

23 April: Air Marshall Sir Bruce Ferguson, Reflections and Highlights of his senior service career.

always welcome. There is no registration needed.

**Bookfair update:** due to circumstances beyond our control, this event has been postponed this year. More information closer to the time, possibly in July.

## U3A

Tawa U3A (University of the 3rd Age) is a community organisation where people who are not working full time are very welcome to come to have fun, make new friends, and share what they have and know.

Some interesting Courses starting soon are:

- Science, Technology and Us – by David Wratt. David is a New Zealand climate scientist who specialises in meteorology and the science and impact of climate change. This course starts 27th of March 2024.
- The Presidency of Harry Truman – Co-ordinator Dave Smith. Starts on the 8th of April.
- Tawa History – Speaker David Parsons. Starts on the 15th of April.

U3A Pétanque is held weekly at the Aotea Lagoon, on Fridays at 10:00 am. It is enjoyed by up to 12 people with an emphasis on cheerful rivalry, plenty of banter, and good fun.

From the photograph below you can see that the rivalry can result in intense interest in whether the gold boule or the silver boule is closest to the kitty (correct name cochonnet).

It only costs \$15 per annum to belong to Tawa U3A and there are over 40 courses available. Have a look at what's on offer on the website <https://www.u3atawa.org.nz/>

From Tim Davin



## SPORTS

From Tawa Recreation Centre:

1. Exciting news – The new gym floor at Tawa Recreation Centre is getting a revarnish during the school holidays. The whole facility will be closed from Saturday 13 – Friday 26 April 2024 to enable the contractors to sand and varnish the floor safely. We will not be open to the public during this time. Contact us at [tawa.rec@wcc.govt.nz](mailto:tawa.rec@wcc.govt.nz) for any queries.
2. Tawa Recreation Centre is unable to provide a holiday programme during the closure. Nairnville Recreation Centre April School Holiday Programme is available as an alternative option. Go to <https://wellington.govt.nz/recreation/activities-for-kids/school-holidays> to register. The programme is OSCAR approved. Contact [nairnville.rec@wcc.govt.nz](mailto:nairnville.rec@wcc.govt.nz) or on 04 479 2022.

Please download this holiday programme flyer.

<https://wellington.govt.nz/-/media/recreation/stuff-for-kids/school-holidays-and-birthdays/files/nairnville-recreation-centre-holiday-programme--april-2024.pdf?la=en&hash=7654F77D062CC252E789FFEBB68DBD96B6D07652>



## SHORT NEWS AND EVENTS



The ANZAC theme street flags have once again gone up along the Main Road retail area for April. Thanks to the Tawa Business Group.

The ANZAC theme street flags have once again gone up along the Main Road retail area for April. Thanks to the Tawa Business Group.



our area lately. Please be careful where you leave your bike.



Next **staying safe** class for older drivers in Tawa on Thursday 30 May: This is a FREE classroom-based refresher workshop for senior road users. Age Concern runs these workshops in partnership with NZTA/Waka Kotahi. They run from 10 am till 2 pm with lunch provided! Registration is required. To register and for more information, call 04 499 6646 or email [events@acwellington.org.nz](mailto:events@acwellington.org.nz)



Worried about your memory? **Brain Health** education group facilitated by Emma Fromings, Health Improvement Practitioner is being held at Linden Community Centre, Monday afternoons from April 8th to April 29th. Fully funded, at no cost to you. For more information or to book a place (essential) call Krishna on 0277257882 or email [bhargavi.rajput@pathways.co.nz](mailto:bhargavi.rajput@pathways.co.nz). (Priority places for patients of Tawa Medical Centre and Linden Surgery)



Local resident Bill is looking for old **bricks**. If anyone wants to get rid of some, please email him on: [bill@responsiblecarenz.com](mailto:bill@responsiblecarenz.com)

### Quiz Night

Tawa Volunteer Fire Brigade Sky Tower team invites you to come enjoy a rad quiz night to raise funds for Leukemia Blood Cancer NZ.

The quiz is on Thursday 18th April, at 6.30 pm at the Abandoned Brewery Porirua. Tickets are \$25 per person, teams of 4-6 people are recommended. Limited tickets are available. Text 027 323 9642 to purchase.



**Tawa Juniors** at Porirua Park, Mascots for the A league Phoenix Women's team, 4 - 0 to the Nix! Thanks Tawa Juniors!! (From Matthew Whyte).



From Alex Dowdle: "St. Patrick's Day in the Borough Tawa was a lively affair, As locals gathered to celebrate the patron saint of Ireland, the streets were awash with green decorations. One standout feature of the festivities was the generous offer of free hats for those who indulged in Irish cider."

## DID YOU KNOW...

Did you know there are some really nice facebook groups for former Tawa College students?

One is called **I went to Tawa College**. Lots of older class pictures to see. You can find it here: <https://www.facebook.com/groups/383539618445884>

The other one is **Tawa College Alumni** and can be found here: <https://www.facebook.com/groups/tawapastpupils>

## 5 MINUTES WITH...





## 5 minutes with Jane Mather

### Can you tell us something about your life growing up?

I was born in Auckland at the Herne Bay Nursing Home and was adopted into my family who lived in Hamilton. My dad, Harry Morrison was in the Air Force, and my mum (Nora) once she had children was a “stay at home” mum. Which is obviously a luxury nowadays. I had two older brothers. Mum unfortunately passed away with cancer when she was just 68, and Dad also of leukaemia at 86.

We transferred from Hamilton to Titahi Bay (for only a few months) before moving to Tawa when I turned 10 so have spent the majority of my life in Tawa – we lived in St Johns Tce for all my teens before I went flatting above the dairy in Linden. I went to St Pius primary school in Titahi Bay until starting college at Viard. Back in my day, we had limited career choices, and it was either become a nun, teacher, nurse, or secretary so I learned shorthand and secretarial skills at Mana Secretarial School.

### Can you tell us something about your life after finishing school?

On graduating from Viard I worked in various roles starting in an accountant’s office before joining the BNZ Marketing Department as secretary to the marketing manager. I then met my husband Danny (a builder) who was the

lifted and turned around on its section back in the day.

We built our first home in Carleton Tce moving in in 1986. The same day we moved into our new home I came home from the hospital with our first daughter so it was a very exciting time. We went on to have 4 children, 3 daughters and a son. I spent 9 years at home during those early years and it was certainly challenging times financially. Our children all went to the local schools, and today still live in the area. It had always been a dream of ours to live on a lifestyle block and an opportunity came with a piece of land in Glenside. We put our house on the market and purchased the land. It was at this stage we realised that in order to build we needed resource consent and so could not start building until it was granted. We therefore lived in tents and a small caravan (for the older girls) for several months while we could get a cottage built, we used a long drop toilet and small shed housing a kitchen, laundry, and an outdoor shower. It was challenging getting ready for work in the morning to go to my corporate job, leaving muddy gumboots at the bottom of the drive and putting on my stilettos. We had friends come up one day and it began to rain and our muddy driveway turned so boggy they couldn't get out for several days – I'm sure you can imagine the mud!!! There was not a lot of money but we were always very hands-on parents and we took our kids on regular camping trips, and also into the bush where they would spend hours whittling bits of wood into teaspoons and jumping off cliffs into swimming holes. They still love to do this and now do this with their own kids.

Once my children were all at school, I returned to parttime work, and began working nights at Maude & Miller; it wasn't long before I was working full time however. I then moved into the city and worked for a Barrister (now a Judge) and ran his chambers. After several years I applied for the office manager job at Tourism NZ. Within a couple of weeks, I had been moved into the Major Events Team and ended up working on the Giant Rugby Ball (GRB) which was a tourism initiative around RWC 2007. The GRB travelled the world and I found myself working in the middle of Paris under the Eiffel Tower. This was a very exciting time in my life and I worked alongside NZ's top chefs the likes of Peter Gordon, and entertainers the likes of Dave Dobbyn, Hollie Smith, etc, and hosted many Heads of State at the functions in the Ball. It was during our time in London in 2008 with the Ball that I was lucky enough to be presented to Queen Elizabeth and the Duke of Edinburgh. We had a brief conversation and she was very witty and very small! I also worked alongside the All Blacks and met many rugby greats including Jonah Lomu – his feet were enormous!!! After touring Paris 2007, London 2008, Tokyo 2009, and Sydney 2010, I was then approached to join RWC 2011 to help organise the RWC here in NZ. I was one of 7 in charge of the 312 VIPs we had at the Cup. I was responsible for all the stadia and theming and furnishing them all for our guests along with hosting at several venues too. I was lucky enough to host Orlando Bloom, and Miranda Kerr, Sir Ian McKellen, Sir Peter Jackson, Prince Albert of Monaco, and many

I also had the responsibility of choosing the menus and taste testing every dish to be served for all the VIP functions - someone had to do it!! I also organised the opening VIP ceremony at the Cloud in Auckland and the After Party at Sky Grand for over 2000 guests, and also the IRB Chairman's Dinner at Kelleher Estate and hosted our Prime Minister, (John Key taught us the corkscrew dance at that function, he was very funny), and other heads of State and Olympic committee members. I was so very lucky to be involved in such a prestigious event and those 5 years with Tourism NZ and with RWC were a highlight of my working life.

Once these events were over and my colleagues were off to the Olympics, I pondered the next step for me, I couldn't go away as my family needed me around and it was through comments by friends saying, I would make a great real estate agent that I did my papers and have been an agent ever since. I find this work just as challenging but love matching people to homes and helping young people into their first homes.

### **What can you tell us about your current daily life?**

My children now all have their own homes locally; I am blessed to have 8 fabulous grandchildren ranging from 13 years down to 2 years – 4 girls and 4 boys. I am so very lucky to have all my children and grandchildren around me.

My family is my world and I think because I was adopted the sense of belonging to a family of my own was/is so very important! I am very proud of the work ethic my children have as adults and how good they are at now being parents themselves.

I have also recently met my birth mother and found 3 sisters and a brother I didn't know I had so there are many exciting times ahead getting to know each other. Wow, I am amazed how alike we all are in interests and mannerisms – it is so true - nature vs nurture is a thing.

I love the ocean and I try to swim each day, especially through summer. I love to fish, dive, and kayak. I play netball, and tennis and have coached many of my children's teams over the years. I am new to Pilates and yoga and now have a passion for this too. I cannot sit and do nothing so this has been good for me to find some inner peace.

In my retirement years, I see myself traveling around Australia in a camper, and then caravanning around NZ. I am lucky in that I have traveled extensively through NZ and love our beautiful country.

Tawa is a fantastic community and when I sell property here it is done with passion as I believe it is a great place to bring up a family. I really do know the community like the back of my hand.

I think I have raved on enough and obviously, this is just a snippet of my life but hopefully gives you the gist!

## NEXT TRA MEETING

The Tawa Residents' Association monthly meetings are open to the public. Feel free to come along! We are always open to new people joining the committee, helping out, or sharing ideas.

We meet upstairs at the Tawa Squash Club on the second Monday of every other month, at 7.30 pm. The next meeting is April 8.

You can find the agenda on our website here: <https://tawa.org.nz/tra-meetings/>

We look forward to meeting you!

Elizabeth, Jackson, Judith, Monique, Miriam, Peter, Richard, Susan and Tony



Monique  
The Tawa Residents' Association

This email was sent to [chris@owdjim.gen.nz](mailto:chris@owdjim.gen.nz)

[why did I get this?](#) [unsubscribe from this list](#) [update subscription preferences](#)

Tawa Residents' Association · 37 Greyfriars Crescent · Tawa · Wellington, Wellington 5028 · New Zealand