



[View this email in your browser](#)

Kia ora,

It's December and the Christmas trees in Tawa are lit. Many houses will put up their Christmas displays and it is a joy to walk around our neighbourhood and take it all in. You find the locations and you can add your own here: <https://www.lightupchristmas.co.nz>

This is the last newsletter for 2023, the next newsletter will be in February. The year has gone fast! We would love to start an appreciation/recommendations corner next year, so if you would like to share a short message about a local person or business that helped you out, please email us on [newslettertawa@gmail.com](mailto:newslettertawa@gmail.com).

In this newsletter you can read about Santa coming to Tawa, a five year celebration of Altrusa, and the RSA Christmas raffle. Find the latest update on the water works, news from the community centres and the library.

There is news from the council and from the Community Board, and of course the regular book, history, and garden corners. For the *5 minutes with...* you can read an interview with Zehabia Rehan, who works for the Tawa Business Group.

Please keep sending all your news and pictures to [newsletter@tawa.org.nz](mailto:newsletter@tawa.org.nz)! We love seeing your stories, especially stories that celebrate our local residents!

Have a good weekend, a wonderful Christmas and a great summer from us all at the Tawa Residents' Association.  
Monique



See [www.tawalink.com/newsletters.html](http://www.tawalink.com/newsletters.html) for issues before 2022.

See <https://tawa.org.nz> for recent issues.

## SANTA AT TAWA PLAZA

### **Santa's coming to Tawa Plaza!**

Come along to the Tawa Plaza and New World Atrium this Saturday, 2 December between 10.00am and 2.00pm. Santa will be there with his helpers, along with a Christmas Fairy and members of Paw Patrol. There will be entertainment from local groups such as the Tawa Learners' Band. There will be food trucks, a sausage sizzle, and popcorn.  
Lots of fun for the whole family!

There is the opportunity to take photos of your children with Santa as well. Donations will be collected for our local food bank (cash, non-perishable food items, and toys).

A great event organised by our local service clubs Inner Wheel, Rotary, and Lions, and sponsored by Collective First National Real Estate



*Santa's sleigh is ready for Santa! He'll be in the foyer behind the Plaza tomorrow, the 2nd, from 10am to 2pm. Picture credits: Judith Air*

## ALTRUSA CELEBRATES FIVE YEARS

Altrusa International of Ōhāriu recently held their five year celebration. Still NZ's newest club, over the last five years they have directly invested over \$31k into the local community (including approx \$22k from the Altrusa International Foundation grants). The members have collectively donated over 300 service hours a year.

To celebrate, they drew a raffle to donate \$500 and five hours service to an organisation they have worked with before, the Newlands Foodbank. It was a good evening to share achievements, acknowledge the work of their fantastic volunteers and members (past and present), and acknowledge the community Altrusa has been a part of for the last five years.

You can find Altrusa on Facebook here: <https://www.facebook.com/altrusaohariu>

Main website: <https://www.altrusa.org>



Picture from the Altrusa Facebook page: <https://www.facebook.com/altrusaohariu>

## RSA CHRISTMAS

The Tawa RSA are holding a festive evening on Friday 15 December and members of the public are very welcome.

A fabulous Christmas hamper raffle will be drawn on the evening – \$5 per ticket. The prizes include vouchers from our local Tawa businesses and Christmas goodies. Prizes will be drawn on Friday 15 December at the clubrooms, 89 Oxford St, after 6pm. They will also be hosting a light supper – a cooked Christmas ham with a bread roll. The bar is open from 4pm.

You do not have to be at the clubrooms to win a prize, but you would be most welcome to join for the evening. You would just need to sign in at the bar. If you wish to purchase tickets please email [tawa.rsa@xtra.co.nz](mailto:tawa.rsa@xtra.co.nz) with your name and telephone number and how many tickets you would like to purchase.

On Sunday 10 December, the monthly Sunday Roast Dinner evening is also on, for \$25. Dinner service starts at 5.30pm. Please register beforehand to John on [jfgplunkett@gmail.com](mailto:jfgplunkett@gmail.com).



## NEW FOODSTUFFS FACILITY

### **Foodstuffs North Island opens new Wellington cross dock and depot facility**

- The new facility is a \$21 million dollar investment in the region
- New state-of-the-art facility will modernise the way the co-op distributes groceries across the Wellington region
- New site is an investment in best practice and will see the co-op provide greater levels of safety, service and quality
- 3,250m<sup>2</sup> of buildings set on 8,775m<sup>2</sup> site
- 6 truck bays for simultaneous loading
- Will employ around 30 people
- The third regional transport depot opened by the co-operative in 14 months

Foodstuffs North Island, the 100% New Zealand owned and operated co-operative behind PAK'nSAVE, New World and Four Square has recently opened a new cross dock and depot facility in Grenada, Wellington. The new state-of-the-art, multi temperature facility is designed specifically for the supply and distribution of groceries and will modernise the way groceries and other essentials are distributed across the Wellington region.

The new \$21 million dollar facility is the third new regional transport depot to be opened by the co-operative in the last 14 months, following new sites in Whangārei and Hastings, and is equipped with dedicated docks for loading and unloading, which allows for up to six trucks to be loaded simultaneously, meaning more on-time deliveries for stores in the Wellington region.

With 3,250m<sup>2</sup> of buildings, the equivalent to half a rugby field, set on an 8,775 square metre site, the Grenada Transport & Milk Depot will maintain cool chain

The facility will serve as a vital hub for receiving bulk orders of milk as-well-as chilled, frozen, and produce orders from Foodstuffs North Island's Palmerston North distribution centres. The new facility will receive these larger orders while teams efficiently breakdown, sort, pick and dispatch final deliveries to individual stores across the Wellington region utilising a fleet of smaller trucks. Regional suppliers will also benefit from being able to use the site for delivering goods destined for Foodstuffs North Island's larger distribution centres across the North Island.



*Foodstuffs North Island's New Cross Dock and Depot Facility at Grenada.*

Chief Executive of Foodstuffs North Island, Chris Quin said: "This new site means we're going to be able to provide a new level of supply chain excellence to the Wellington region, helping ensure food is distributed efficiently, safely and with the highest levels of quality. This is the third regional facility we've opened in the last 14 months, and we've got more plans in the pipeline because we're committed to providing customers right across the North Island with access to the freshest, highest-quality products at the best value, while becoming more efficient and sustainable."

Key features of the new facility include its capability to collect bulk produce orders directly from local markets and sort them in a temperature-controlled environment using state-of-the-art equipment and facilities. This innovative approach will not only streamline operations but also ensure the highest level of

The new site will enable Foodstuffs North Island to handle more freight than ever before, while providing capacity to support the growth of the Wellington region and to service future stores. Team safety will also improve through having a purpose-built facility designed to the highest standards. The new site also has sustainability benefits with more efficient CO2 refrigeration, the latest LED automated lighting and the ability to charge electric trucks and cars on site.

The new Grenada Transport & Milk Depot is a forward-thinking facility that meets Foodstuffs North Island's demands of today, while anticipating the needs of tomorrow. The investment reflects Foodstuffs North Island's ongoing commitment to customer service, community growth, and embracing sustainable practices in every aspect of its operations.

Foodstuffs press release



*Rawiri Rikihana from Ngāti Raukawa, Evan Hastie – Operations Manager, Chris Quin – Chief Executive, and Greg O'Connor – MP for Ōhāriu.*

**NEW MESSAGE BUSINESS**

seven days a week from 9am. Pop in and see them at 210 Main Road, Tawa.  
Find their website here: <https://www.comfortzoneyy.com>



## TAWA COMMUNITY BOARD

It's been just over a year of action for this elected Tawa Community Board, so we thought we'd update you on work so far. Early on in the triennium we celebrated the opening of two spaces for our community with the Wall Park Party and our new community-led Skate Park, both of which are being well-used by the community.

We have been actively engaging with Porirua City Council to deal with the ongoing odour issues from Spicer Landfill. We have managed to increase accountability for odour reporting which has slowed down the process to increase the landfill size, until the issues can be controlled.

We have also been busy with District Plan oral submissions. Like many areas of Wellington, Tawa is set for growth. We're excited about the planned future, and need integrated planning to ensure our streets and public spaces are improved both to benefit our locals and welcome new residents to our

Tawa has many planned changes ahead that we continue to advocate for, ranging from roading safety issues, Porirua stream issues, public toilets in Linden to the Grenada North Sports hub – which we have been advocating to keep in the Council budgets as originally planned. We presented to the Greater Wellington Regional Council, Transport Committee to (successfully) advocate for the retention of our On Demand Bus service, which has been a game changer for many in our community for accessibility and mobility.

We also regularly hear from hard-working community members who help make Tawa a better place. Highlights include presentations from organisers from Tawa College Manaaki night, an information evening providing support for young people, the Tawa Community Patrol, and Kids Enhancing Tawa Ecosystems (KETE), which is an awesome kaupapa lead by our local rangatahi who are replanting farmland in Tawa to improve our wetlands and stream quality! Knowing who is doing what in our community helps us to help Tawa continue to be a place that can look out for its people.

We continue to work closely with Tawa Residents Association and the Tawa Business Group. Wellington City Council acknowledges that Tawa is a well-connected community and as such we are able to successfully advocate for the things that we need to continue to make Tawa a fantastic place to live.

Most recently we welcomed Liz Langham to the Board following a by-election due to Janryll Fernandez moving overseas. As the year closes out, we enjoyed helping out at another successful Spring into Tawa Festival and hosting the annual Tawa Primary School Citizens Awards. Hearing the stories about the way that this group of students have contributed to their schools is certainly uplifting and we acknowledge their schools and whānau for supporting them to be such outstanding citizens.

We hope everyone enjoys a happy summer and we'll see you in 2024 for another year of action in Tawa.

Jill, Jackson, Liz, Miriam, Rachel and Tim.

Please report any Spicer Landfill odour complaints on the Porirua Government website, here: [https://porirua.govt.nz/services/rubbish-and-recycling/spicer-landfill/spicer-landfill-odour/landfill-odour-complaint-form/?fbclid=IwAR3ferg\\_NetcTd31beBJd8Er73Uo4qPrb\\_B-BGlt-O83-QAcjiL0Hdy-Imo](https://porirua.govt.nz/services/rubbish-and-recycling/spicer-landfill/spicer-landfill-odour/landfill-odour-complaint-form/?fbclid=IwAR3ferg_NetcTd31beBJd8Er73Uo4qPrb_B-BGlt-O83-QAcjiL0Hdy-Imo)

If you see a water leak, please check here to find out if it has been reported yet: <https://www.wellingtonwater.co.nz/resources/maps/job-status-map/>



*The photo includes Tawa Community Board members, Northern Ward Councillors and Ohariu MP Greg O'Connor and the fantastic recipients of the 2023 awards.*

## MP FOR TE TAI HAUĀURU

It has been brought to our attention that we didn't make mention of the MP for Te Tai Hauāuru in the last Tawa News and we agree that we should have included this in our summary after the election.

Tawa is in the New Zealand parliamentary Māori electorate of Te Tai Hauāuru. The electorate spans the West Coast of the North Island, from South Waikato down to us in Tawa at its most Southern point. It includes all of the Taranaki region and all of the towns in the Manawatū-Whanganui region.

A huge congratulations to Debbie Ngarewa-Packer, who was successfully elected the MP for Te Pāti Māori for Te Tai Hauāuru on 14 October 2023. Debbie is a descendent of Ngāti Ruahine, Ngāruahine and Ngā Rauru iwi. Before becoming an MP Debbie was the deputy mayor of South Taranaki District Council from 2007-2010 representing the Pātea ward. Debbie has been very actively involved as an iwi leader and as an advocate for Māori health and the environment for many years. Debbie is also the co-leader of Te Pāti Māori

awesome effort by Debbie Ngarewa-Packer.

You can find Debbie on Facebook here: <https://www.facebook.com/debbiengarewapacker>

## FROM THE COUNCIL

### Update from Councillors McNulty & Randle

Kia ora Tawa. As always, remember that Fixit is available report any problems to Wellington City Council ([Fixit - Wellington City Council](#)) and feel free to get in touch with either of us if you're having any issues dealing with council ([ben.mcnulty@wcc.govt.nz](mailto:ben.mcnulty@wcc.govt.nz) / [tony.randle@wcc.govt.nz](mailto:tony.randle@wcc.govt.nz)).

### Grenada North Sports Park and Council Budget

Council are starting to get to the pointy end of the 2024/25 budget and 10 year plan with many tough decisions still to be made.

After a promise in June as part of the 2023/24 budget to commence work on the Grenada North Sports Park, council officers initially proposed delaying work by several years for the 10 year plan. As your local councillors, we have lobbied hard to make sure council keeps its promise to Tawa residents and we were supported with great public submissions from Rachel Allan of the Tawa Community Board and Michael Chapman of Tawa AFC. We have been successful in this round of budgeting (however a more formal budget will be put together in February and this project still has a large target on its back) to ensure scoping works continue this financial year and that drainage works will commence on the fields in the 25/26 financial year. Officers now report work has started on "*scoping the project and plan to commence further site investigations Geotech, contamination, hydrology, topographical survey, transport etc*" followed by design and public consultation. Construction is scheduled for later in 2025.

Regarding **Linden toilets**, officers also report that "*project planning has started to build the toilets in 2024/25. We are considering design solutions. This will be presented to the Tawa Community Board in early 2024.*"

More broadly on the **WCC budgetary situation**, council are looking at a mix of asset sales, service reductions, rephasing/cancelling capital projects and rates

whether we have got the balance right.

Finally, all Northern Ward Councillors hope everyone has a great Christmas and summer holiday. Please drive safe.

Ben & Tony

## WATER WORKS

### **Main Road, Tawa watermain renewals on track to finish before Christmas**

With all 465m of watermain and all waters services now laid, works on Wellington Water's Main Road watermain renewal on behalf of Wellington City Council is on track to be completed before Christmas.

"We're making our best efforts to get works on site finished by 22 December," says Wellington Water Chief Advisor - Drinking Water, Laurence Edwards.

"This does mean our crews will be continuing to work hard through the pre-Christmas period, but our priority is to get this project fully completed for a clear Christmas break and fresh start for the community in the New Year."

Meanwhile, throughout the rest of November, crews will continue with completing valve and fire hydrant blocks along the new watermain, start to reinstate the road surface and carry out a series of technical tests.

"Then during December, we will be doing the big switchover, connecting both ends of the new watermain to the existing watermains and changing over all the water services for each property to come from the new watermain – and disconnecting the old watermain from the existing mains."

"We will have to undertake some of the connection work at night when water demand is low. The team will be working hard to keep any noise to a minimum and do thank close-by residents for their understanding."

The final touches will then be completed with road surface reinstatement, paint road markings and tidying up site.

"As always, a huge thank you to the business and residential community on behalf of Wellington Water, Wellington City Council, and the contractor. We greatly appreciate your understanding and are pleased to be able to deliver a resilient new watermain.

visit:

[www.wellingtonwater.co.nz/projects/tawa-main-road-watermain-project/](http://www.wellingtonwater.co.nz/projects/tawa-main-road-watermain-project/)



## HISTORY CORNER

### Having a lovely time...

To some, the thought of postcards featuring Tawa might seem a little odd. Younger readers may even need to ask, 'what is a postcard and what is it for?'

Usually associated with a holiday at an exotic destination far, far away, postcards let you tell friends, relations and work colleagues that you were having a lovely time and missing them terribly (or not, as the case may be!). They give a glimpse of the idyllic location where you were enjoying yourself (or not).

Forty years ago the Tawa Borough Council produced a set of six postcards featuring scenes in the valley. Presumably they were intended to show-off the key features of the then borough. Like all good postcards they show the area at its best – there is barely a cloud visible in most of the scenes.

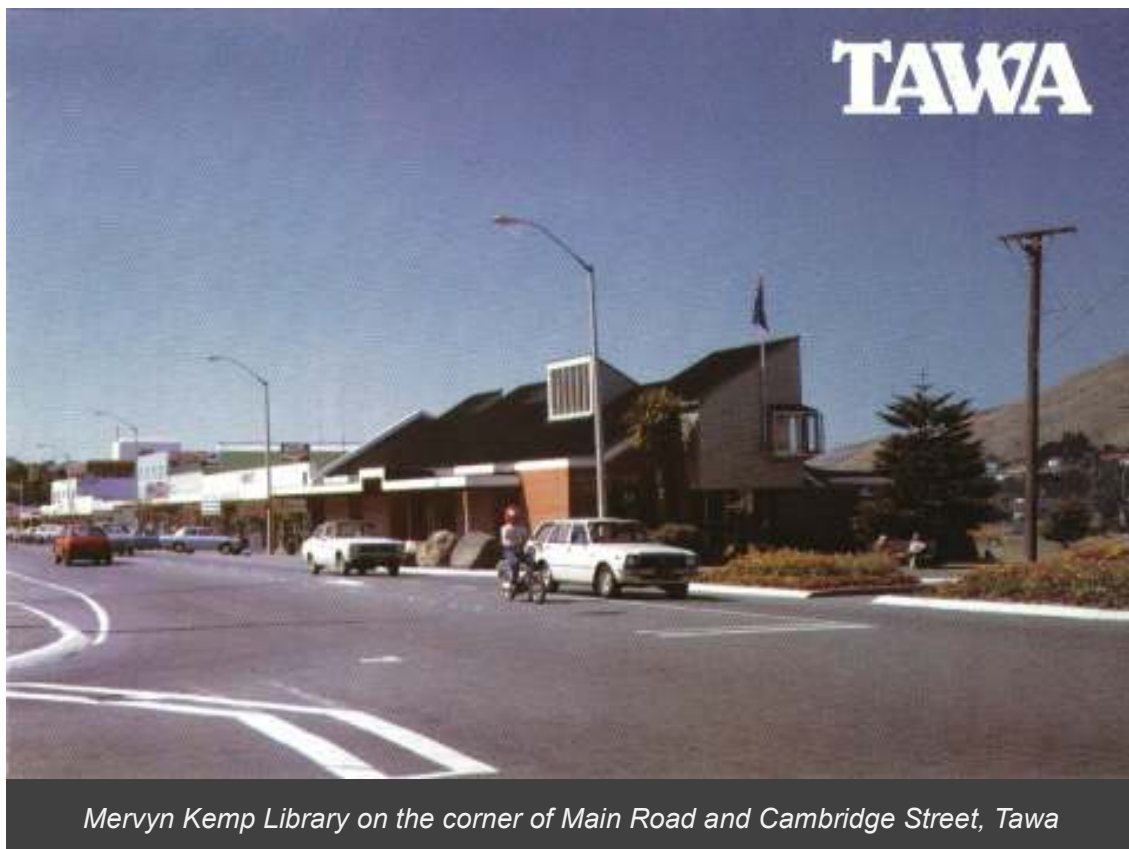
The example I've chosen shows the Mervyn Kemp Library on the corner of Main Road and Cambridge Street. While the exterior of the library has not changed much in the intervening years, much of the surroundings have. Down

foreground, and vintage car enthusiasts may salivate over some of the cars visible. Other cards in the series featured the Bucket Tree, Willowbank Park, Pensioner flats in Lyndhurst Road, the playground, skating rink and swimming pool near Grasslees Reserve and an elevated view of the Main Road commercial area from Hampton Hill.

The Tawa Historical Society has some sets in its collection. Which begs the question, did anyone actually send any of these cards to friends and relations elsewhere in New Zealand or even overseas? Send your answers on a postcard...

David Parsons

Chairman Tawa Historical Society



**REPRINT AVAILABLE**

### **A book about Redwood Bush, Tawa – a further reprint now available**

This popular book was published in October 2022, and after quickly becoming out of print, a further reprint has now been undertaken by Friends of Tawa Bush

This was author Gilbert (Gil.) Roper's third publication relating to Tawa. Gil sadly passed away earlier in 2023. He was motivated to write this book: *Redwood Bush*, Tawa after reading how Redwood Bush was saved when the Redwood subdivision began making inroads into the native bush for housing development in the 1970s. Many Tawa residents objected seeing pristine native bush destroyed. Ultimately, the Tawa Borough Council secured a loan from The Treasury to purchase the area as a reserve. Today it's an invaluable recreational resource of mature lowland native bush.

The colour-illustrated, 160-page, A4 size book features:

- native bush in Tawa at the time of pioneer settlement
- some history of the Redwood subdivision
- residents of Tawa protest and action is taken
- recollections by residents of changes in Redwood Bush over time
- walking Redwood Bush in the present day
- visual details of the native flora and birds in Redwood Bush and how these have changed
- lizard studies, lichens and fungi recorded in Redwood Bush
- pest control and the resurgence of the flora and fauna
- information on a new signed botanical walk in Redwood Bush.

Orders can be placed with Richard Herbert, Friends of Tawa Bush Reserves: [herbert.r@xtra.co.nz](mailto:herbert.r@xtra.co.nz) with payment made by direct credit to FOTBR's bank account, using 'Surname or organisation' for Particulars and 'Redwood Bk' as a Reference. The FOTBR account number is: 03 1534 0043966 25 and the cost is \$45 per book.

When placing an order with Richard, please indicate the address to which the book is to be delivered to. For Tawa residents arrangements can be made for hand delivery. For delivery beyond Tawa, books can be couriered, but this will incur an extra charge. Books can also be purchased from Tawa Books and Post, Main Road, Tawa for \$45 (cash).

This publication is sponsored by the Friends of Tawa Bush Reserves (FOTBR) which is a non-profit organisation and seeks to defray the cost of printing through the sales of the book. See: <https://tawabush.org.nz>.

# Redwood Bush TAWA

Gilbert Roper



## BOOK CORNER

As 2023 races to a close, I've been reflecting on book awards, how amazing they are for celebrating fantastic books and introducing us to books and authors we may not otherwise have found. Here's two great examples from November.

***An Immense World: How Animal Senses Reveal the Hidden Realms Around Us* by Ed Yong** that won the 2023 Royal Society Trivedi Science Book Prize. I really enjoyed this book, it made me think of the natural world quite differently.

Chair of Judges, Esi Edugyan, described *Prophet Song* as 'soul-shattering and true', adding that readers 'will not soon forget its warnings'. I found that review on The Booker Prize website, I'd recommend checking it out, there's a wealth of information – interviews, extracts & podcasts – all fascinating. The website inspired me to read the ***Seven Moons of Maali Almeida by Shehan Karunatilaka*** (2022 Winner) and I was not disappointed.

Another award winner that has been of practical importance in our household is the 2023 Australian Book Industry Award Book of the year Winner ***Recipe Tin Eats: Dinner by Nagi Maehashi***. Great recipes, easy to read and use with the added advantage of QR code links to short "how to" videos.

Here's to a wonderfully festive summer season and looking forward to 2024!  
From the Tawa Books & Post team.

*Click below to find out about the November Award winners:*

<https://royalsociety.org/grants-schemes-awards/book-prizes/science-book-prize/>

<https://thebookerprizes.com/the-booker-library/prize-years/2023>

*Click below for more information about the books mentioned:*

<https://www.tawabooksandpost.co.nz/collections/book-corner>



## BIRD REHABILITATION CENTRE

Every year in spring, baby birds get lost or hurt. We are lucky there is a bird rehab centre just over the hill from Tawa/Linden, in Ōhāriu Valley: the

For nearly twenty years, WBRT has been operating a bird rehabilitation hospital located in 24 hectares of farmland in Ōhāriu, near Johnsonville. The brainchild of Craig Shepherd, Founding Trustee, the centre is mostly self-funded with help from volunteers, donors, and the community. WBRT treats over 1,000 birds a year, taking in all types of native and non-native birds who have been injured or orphaned.

Find out more on their website: <http://www.wbrt.org.nz>



*Little starling Bennie, found on the steps. The baby bird was fed and cared for by the amazing people at WBRT.*

## KETE UPDATE

A huge thank you to all of you who have supported Kids Enhancing Tawa Ecosystems this year! Special mention must go to Friends of Tawa Bush Reserves for their availability and willingness to go the extra mile to make sure that students could get their plants in the ground.

Highlights from this year include:

- the expansion of our planting at Takapū Valley; to date we have planted over 12,000 plants in the area
- school plantings, driven and planned by students (based on their learnings from Takapū Valley), resulting in significant improvements in school environmental conditions
- a number of schools working with various environmental educators such



KETE Student Leaders recently joined Olivia from Sustainable Coastlines to carry out a Litter Intelligence survey at the mouth of Te Kenepuru stream as it enters the estuary. As part of caring for Te Awarua o Porirua, they collected litter and categorised it, comparing it to the litter they collected last year. Plastics were the largest category by both number of items collected and

Following this trip, students took part in a Take Action workshop, where they discussed their findings and came up with potential actions. Ask a student leader for their ideas!

Applications are now open for the KETE Student Leadership Team for 2024. Contact Sue on [sue.lum2@wcc.govt.nz](mailto:sue.lum2@wcc.govt.nz) for more information or visit our [Facebook page](#).

Sue Lum  
KETE Programme Coordinator

## CAROLYN'S GARDEN CORNER

After very spring like weather, hot, cold, some sun with plenty of rain, the growth in our Wellington gardens since the last newsletter has been incredible, both weeds and desirables. Living in the Southern hemisphere means this is an exceptionally busy time for us gardeners. Not only are we trying to sort present buying, Christmas baking and decorating, we are also trying to ensure our gardens are filled with colour and edibles for Christmas/summer.

Key tasks over the next few weeks are weeding and planting. Fill those gaps with edibles or flowers so there is no room for weeds and then mulch in between to retain water. Plant up pots for summer colour but add some water-retaining crystals to help reduce watering frequency.

Salads planted now will be ready for Christmas day so get them in asap so you can skite to your guests about your homegrown lunch. A great tradition among gardening families reunited around the Christmas table!

Last week we were very fortunate to visit 33 glorious gardens during the Taranaki Garden Festival. There was so much beauty and as you'd expect some plantings appealed more than others. What really stood out for me though is how so many gardens up there have moved on from rhododendrons to embrace sub-tropicals.

I love the restfulness of cool greens in some parts of the garden but I love colour more, so it is an exercise in self-control to keep some areas more concentrated on textures and forms. It is worth the restraint though as there are some fabulous foliage plants out there and now is the time to get them in the ground. The garden centres are relishing the trend for subtropical planting, but

come from sheltered conditions and may not look that way for long once planted. Having said that, many Tawa gardens are lucky to have quite warm micro-climates that can indeed grow plants like bananas and pineapples successfully.

An alternative to planting out is to keep these sub-tropical treasures in pots so they can spend the summer outdoors and become indoor houseplants once the cooler weather arrives.

Rather than just going for the big lush leaves, try to incorporate a mix of different forms, textures and shades of foliage in your plantings. (Of course lush leaves are also complimented by splashes of bold colour from plants like the large flowered New Guinea impatiens.)

Happy gardening!

Carolyn Campbell

<https://www.facebook.com/profile.php?id=100067872369384>



*On the left: Contrasting foliage. On the right: Pot up summer colour*

## TAWA COMMUNITY GARDEN

The shed at the Tawa Community Garden in Oxford Street has already had one coat of stain. However, it needs another coat.

There are work sessions in the garden every weekend if you are keen to help out:

Every 2nd and 4th Saturday of the month.

Every 1st, 3rd and 5th Sunday of the month from 1.30-3pm.



*The shed looking good in the new coat!*

## TAWA BID

### **Tawa's Christmas window display competition**

Follow the trail of festively decorated windows throughout Tawa and discover your favourite display. Tawa Business Group is continuing its popular competition again this year where 20 local businesses are celebrating the joys of Christmas through their magical and enchanting window displays. Winning windows are chosen by the voting public so remember to vote for your favourite by Sunday 17 December. There are also spot prizes available for lucky voters. Flyers are available in many businesses throughout Tawa and also in the library and community centre. To find out more, visit: [Christmas Window Display Competition \(taubusiness.co.nz\)](https://www.taubusiness.co.nz/Christmas-Window-Display-Competition)

work or wanting a change in career, check out all the vacancies on the job board. [Job Vacancies \(tawabusiness.co.nz\)](http://www.tawabusiness.co.nz)

You can find the Tawa Business Group on Facebook here: <https://www.facebook.com/tawabusiness> and on Instagram here: <https://www.instagram.com/tawabid/>



## TAWA COMMUNITY CENTRE

**Our Tawa College and Tawa Intermediate uniform drives** are coming up again. Please consider donating any clean, good condition second-hand Tawa College or Intermediate uniforms to either the Tawa or Linden Community Centres so we can offer them to the community at the end of the year. Tawa CC is open Monday to Friday, 9.30am-1pm and 2-4.30pm, and Linden CC is open Monday to Friday, 10am-1pm, 2-4.30pm. On Saturdays, you can drop your uniform at Nicola Ann Harwood Goldsmith in the Plaza, 10am-3pm. We will be hosting our uniform drives at Tawa CC on Tuesday 19 December, 2-5.30pm and at Linden CC on Tuesday 9 January, 5-7pm and Wednesday 10 January, 10am-12pm. On these days the donated uniform will be available for koha (cash only), and all money received is given back to the schools to support students in need of uniform throughout the year. We really value your donations – last year we raised hundreds of dollars; this has all already been used to help uphold the mana of our young people by ensuring that they have uniform to wear to school.

**presents** for KCA and the Nest Collective. KCA are accepting donations of festive treats or presents to include in Christmas food parcels for families who need some awahi over this time. These could include treats such as chocolates, jelly, mince pies, and Christmas presents. The Nest Collective are accepting donations of new baby items for families who need them most. They most need:

- baby clothing (6-12 months),
- toys like loveys, rattles, teething blocks, and shape sorters,
- books suitable for a baby or toddler, and
- hooded baby towels.

You can drop your gifts off here at the community centre anytime during our office hours (Monday to Friday, 9.30am-1pm, 2-4.30pm). We are collecting gifts for KCA until 15 December and for the Nest Collective until 18 December.

Our **pop-up e-waste collection is back** – drop off your unwanted devices and appliances for FREE recycling! The collection will be here at the community centre on Wednesday 6 December, 9.30am-3.30pm.

Collection includes:

- computer equipment
- laptops and phones
- power tools
- audio equipment
- cords
- household appliances such as toasters, heaters, microwaves, vacuum cleaners, etc.

Please make sure that your e-waste is neatly packed in a bag or a box so they are easy to load onto our truck. Please also note that we cannot accept TV or monitor screens, whiteware, or dehumidifiers. Thanks to our friends at the Wellington Tip Shop for helping to run this collection.

We have ordered another set of **200L emergency rainwater tanks**. Tanks now cost \$122 each and will be available for pickup here at the community centre during office hours (Monday-Friday, 9.30am-1pm, 2-4.30pm). To order a water tank please email us at [tawacc@wcc.govt.nz](mailto:tawacc@wcc.govt.nz) with your name, phone number, and the number of tanks you would like. We take payment via cash or EFTPOS when you come to collect the tank. (photo attached)

creative Christmas decorations with the wonderful Sue. Attendees will need to have a caregiver with them. Spaces are limited – please RSVP by emailing [tawacc@wcc.govt.nz](mailto:tawacc@wcc.govt.nz).

The community centre is closing for the Christmas break on Friday 22 December at 1pm and will reopen as usual on Monday 15 January. Enjoy the summer break!



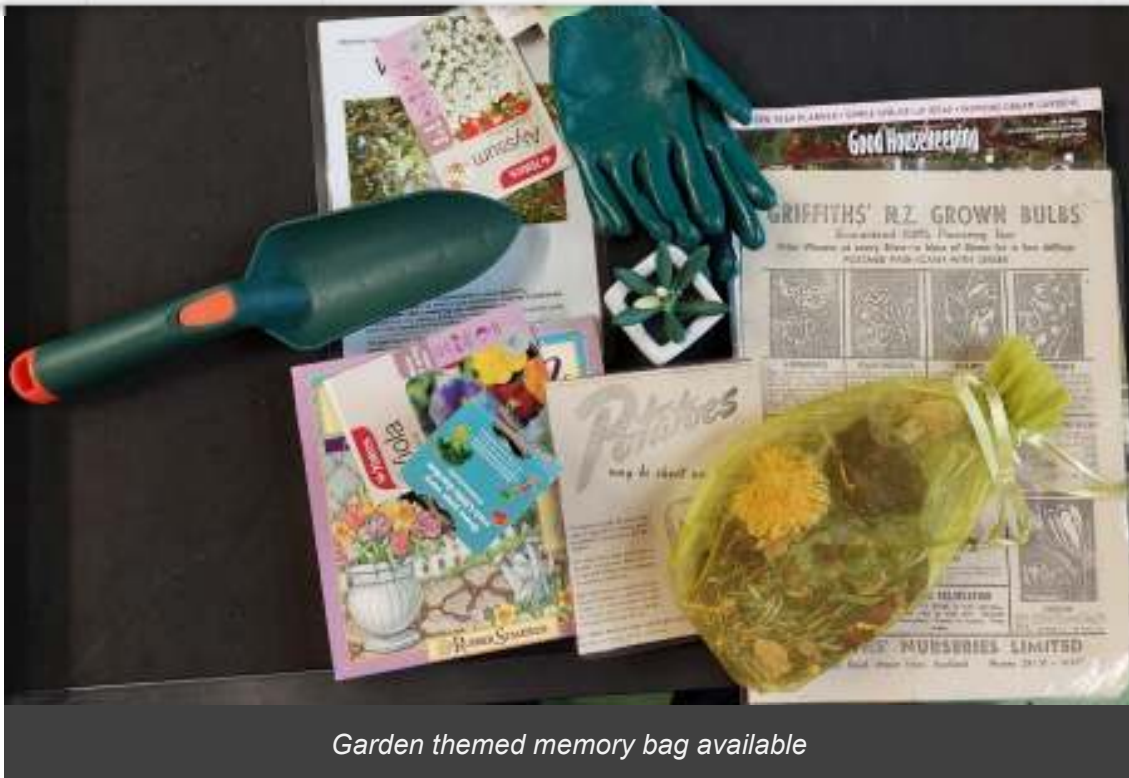
## TAWA LIBRARY

What is a memory bag? These are collections of vintage items and images to encourage conversation for people with dementia or memory loss. There are six bags in our collection and they are free to borrow for three weeks and can be reserved free of charge.

The photo below shows the items found in the 'Garden' memory bag. Each bag has a special theme with items designed to recreate memories, conversation and connection – craft, food, general, music, and work.

Find out more here: [Memory Bag | He Kete Pupuri Mahara \(wcl.govt.nz\)](#)

Wendy Jacobs



*Garden themed memory bag available*

## TAWA ROTARY CLUB

**Tawa Rotary Club thanks everyone** for their support of our projects and events in 2023. We wish everyone a happy and safe holiday season. We look forward to bringing you some more great items in 2024 and to your ongoing engagement and support.

Events coming up:

- Santa comes to the Tawa Plaza December 2nd
- Tawa Rotary Community Concert in the Park February 18th
- Rotary Book Fair April 2024
- A Peace Labyrinth in Tawa coming soon.

Tawa Rotary is looking for more members to be part of our club. Please contact us if you'd like more information or you'd like to come to a meeting free of charge and get to know some of our team.

Contact: [Tawarotaryclub@gmail.com](mailto:Tawarotaryclub@gmail.com)

### **Tawa Rotary Christmas puddings**

Get ready for Christmas! The puddings are \$25 each and all proceeds go back into the community. The pudding is presented in a tin. Great for a present.



### **Winter is over, summer is here**

Time for Tawa Rotary's Summer Pyjama Drive for Foster Hope. Many of the children taken into foster care have never had a brand-new pair of pyjamas of their very own and knowing that someone has shopped especially for them is a huge boost to them. Anything we can do as a community to help these youngsters feel loved and valued is priceless. Donations of new summer pyjamas for 0 to 16-year-olds can be left at the drop-off bin at New World Tawa.



### Concert in the park 2024

Find those dancing shoes you had out last summer, get them polished up and start practising those moves! On Sunday 18 February the RNZAF *Jive Bombers* will be back at Grasslees Reserve for another lively, free Rotary-sponsored concert. Featuring the vocal talents of LAC *Stephanie Paris* and LAC *Matt Mullholland*, this team of go-getters will be serving up a platter of musical gems ranging from Amy Winehouse and Guns N' Roses to Earth Wind and Fire and Bruno Mars. Get that date marked in your diary now!



*RNZAF Jive Bombers with LAC Leonardo Coghini on keyboard  
Photo supplied by: RNZAF*

## INNER WHEEL TAWA

Congratulations to the Mexted Motors Spring into Tawa Committee for such a successful event on Saturday 28 October! The weather was perfect. The Inner Wheel Club of Tawa had a great day and the annual raffle was a huge success! The winners are:

1st Prize: Tawa Resident Catherine Veale, Harcourts Tawa Real Estate Agent

2nd Prize: Tawa Resident John Plunket, Tawa RSA Secretary

3rd Prize: Tawa Resident Joan Gargan

The Inner Wheel Club of Tawa wish to thank the following businesses for their very generous support:

Our sponsors: Harcourts Tawa, Kelly Plumbing & Gas Ltd, and Michael Kelly.

Our raffle item donors:

Weber Q for BBQ & trolley

Mitre 10, Porirua

New World, Tawa

The Borough

Paisley Gifts

Tawa Books & Post

Salon Savoy



## SPORTS

**Badminton open day** on Saturday 27 January 2024, 10am-2pm at Taylor Park, Tawa Street. All welcome, come and learn about the fast and fun sport of

### **New World Tawa Ham and Turkey Squash Tournament**

Tawa Squash is gearing up for its biggest tournament of the year, the New World Tawa Ham and Turkey Tournament. This is also the biggest club tournament on the Wellington calendar now into its 18th year.

This was designed as a Xmas goodwill occasion with divisions of four playing round robin matches (3 matches each) between Tuesday 5 and Sunday 10 December. All competitors win a prize – a ham (1st), turkey (2nd), leg of lamb (3rd) and a large chicken (4th). This year there are 136 entrants all looking forward to winding down the year with a guaranteed prize that will be able to assist with their Xmas menu. New World Tawa have been an exceptionally flexible and generous partner providing the necessary supplies at a sharp price and providing food for a prize giving BBQ and sweets for a kids lolly scramble at the same time. This has highlighted Ashleigh and Scott's ongoing commitment to the local community.

### **Eight-time Commonwealth Games Medalist Joelle King comes to Tawa**

New Zealand's current top women's player and current world number 8 made a surprise visit to Tawa Squash Club recently to talk to the high performance juniors from the lower North Island who were being put through their paces at Tawa by National Performance Coach Jonathan Kemp. Joelle was very generous with her time and spoke to the players about her journey to the top, her experiences as a professional squash player and advice on how the juniors could follow in her footsteps. She also led some warmup and drill sessions. Not only were the juniors being analysed and upskilled, but local high performance coaches Evan Williams and Matt Green were also being given guidance on how to get the best out of the individuals while being encouraged to maintaining coaching consistency with what Squash New Zealand provides.

**Oliver Dunbar selected for NZ Junior team** to play a test series against Australia.

Tawa's Oliver has been selected for the NZ Junior team to play Australia at the Devoy Squash Centre in Tauranga on December 3rd and 4th. The NZ team will be seeking revenge after Australia won last year halting a five-year NZ winning streak.



*Joelle King and Jonathan Kemp (centre), Tawa's national junior champion Oliver Dunbar and high performance coaches Evan Williams and Matt Green (right).*

## SHORT NEWS AND EVENTS





Be protected against  
**meningococcal disease**

**Te Kāwanatanga o Aotearoa**  
New Zealand Government

**Te Whatu Ora**  
Health New Zealand

If you or your children aged 13-25 are moving to boarding school, a university hostel, army barracks or similar in the new year they are eligible for a free meningitis vaccine. You can book this at Tawa or Linden medical centres or with your regular GP clinic. Immunisation is your best protection from meningitis. Until February, this is also available free for people already living in these situations and for tamariki under 5 who have not had this already. From Tawa Medical Centre and Linden Surgery.



Koha Playgroup (0-2 years) have their Christmas party at the Tawa Community Centre on 19 December 9.30am. There will be party food, decorations and a visit from Santa!



Free Yoga in the Park is back! Enjoy a revitalizing 45-minute yoga session immersed in the natural beauty of Willowbank Reserve, near the Bucket Tree on Sunday 10 December from 10.30-11.15am. This is suitable for all ages and levels. The class is taught by Samantha Rozitis, local Beyond Yoga studio owner. "This event is our way of celebrating the vibrant spirit of Tawa, and we'd love to see you there!"

Bring your mats, towels, or blankets, and let's unite as a community for a morning of wellness and connection. This event is weather-dependent and we will be in touch if rain is in the forecast. Register

here: <https://www.beyondyoga.co.nz/service-page/yoga-in-the-park-willowbank-reserve?fbclid=IwAR2CSRdHcwzODCSbjavvJ0TDPuzAMuP1tEwwqswberhMR2VSfijyR3H2zPE>



Main Road Tawa at night. From Harley Luf.



Another great picture from Harley Luf, do you know where this is?



This was found at the top of Colonial Knob one morning at 6am! Makes you wonder how it got up there! From Muthoni CK on Facebook.

## DID YOU KNOW...

Did you know that the Health and Disability Advocacy Service is a free service that operates independently from all health and disability service providers, government agencies and HDC? If you want to know more about your rights when using health or disability services, get questions answered, or make a complaint, they may be able to help.

It's a free service. Advocates should be able to:

- Help you understand your rights when using health or disability services
- Listen to your concerns
- Talk through your options
- Help you to formulate your complaint and make a complaint
- Support you while you resolve your issue
- Freephone: 0800 555 050

## 5 MINUTES WITH...



### **5 minutes with Zahabia Rehan**

#### **Can you tell us something about your life growing up?**

My journey commenced in the sprawling metropolis of Karachi, Pakistan, often referred to as the "City of Lights." As the fourth child in my family to my nomadic spirit, I had the privilege of calling a few other places home to my accomplishments, both in my personal and professional life. I was nurtured within the loving embrace of a tightly knit family, where both my parents were fervent entrepreneurs, unwavering in their pursuit of a brighter future for their progeny. As the youngest in the family, I was pampered and adored. My educational journey was marked by curiosity, as I attended various institutions that allowed me to explore the rich tapestry of knowledge and culture. Yet, the paramount importance to me was the ceaseless adventure of uncovering the world around me, with the warmth and merriment provided by my family and friends imbuing vibrant hues into the canvas of my life.

Presently, most of my family resides in Pakistan, while one of my sisters relocated to Canada following her marriage. I facilitated her move to New Zealand. My nomadic spirit led me to call several other places home as well,

**Can you tell us something about your life after finishing school?**

After school, I embarked on a whirlwind journey through hobbies (writing about my travels and delicious cuisines). I discovered the thrill of village culture in Pakistan, in the clear air of the Sindhi villages, tasted the delicious yet simple food, and wandered through the historic streets and farm fields. Work has been a constant companion, and I found my calling in supporting my mum in her business activities. I have also been customer-focused and have great communication skills, so I always looked for ways to utilize them. My family has always been my anchor, and I have the joy of raising beautiful, spirited daughters who are my source of inspiration.

**What can you tell us about your current daily life?**

My days are a delightful concoction of family, work, and hobbies. You might spot me at the local parks, gymnasiums/Karate Dojo/swimming pool with my daughters or helping the Pakistani Community with various volunteer responsibilities. When I am not busy with my motherly duties or professional responsibilities, I lose myself in the world of art, as a professional makeup artist and hairstylist. Music, too, flows through my veins, and I never miss a chance to listen to old Hindi/Pakistani Ghazals, old or new hit songs on YouTube or other musical apps. Holidays are a cherished escape from routine, where I explore the serene beauty of the World.

**How long have you lived in Tawa? What do you like about Tawa? What would you like to see improved in Tawa?**

I've never lived in Tawa but have been a proud Tawa visitor for the past 10 splendid years. What I love about Tawa is its sense of community – it is like one big, welcoming family. However, there's always room for improvement, and I would love to see Tawa become even more environmentally conscious, with more green spaces and eco-friendly initiatives.

**What is your favourite holiday destination in New Zealand?**

New Zealand is a treasure trove of breathtaking landscapes, but if I had to choose, I'd say the Coromandel Peninsula. Its pristine beaches, lush forests, and the stunning Cathedral Cove make it a piece of paradise right here on Earth.

**What accomplishments in your life are you the most proud of?**

I'm most proud of raising my daughters and teaching them to embrace life with a curious heart. Professionally, my role at Tawa Business Group has allowed me to support and uplift local businesses, which is a source of immense pride.

**What three things would you like to do in the next 10 years?**

Over the next ten years, my aspirations include embarking on global sojourns with my family of three—my husband and our two daughters, Nehaal (11 years

spearheading more sustainable initiatives. Lastly, I dream of venturing alone to regions besieged by conflicts, offering assistance and support to the local populace in any way I can.

## NEXT TRA MEETING

The Tawa Residents' Association monthly meetings are open to the public. The next meeting will be in February 2024 (date to be confirmed). Feel free to come along! We are always open to new people joining the committee, helping out, or sharing ideas.

We meet upstairs at the Tawa Squash Club 7.30pm.

You can find the agenda on our website here: <https://tawa.org.nz/tra-meetings/>

We look forward to meeting you!

Elizabeth, Jackson, Monique, Miriam, Peter, Richard, Susan and Tony



Monique  
The Tawa Residents' Association

This email was sent to [chris@owdjim.gen.nz](mailto:chris@owdjim.gen.nz)

[why did I get this?](#) [unsubscribe from this list](#) [update subscription preferences](#)

Tawa Residents' Association · 37 Greyfriars Crescent · Tawa · Wellington, Wellington 5028 · New Zealand