



[View this email in your browser](#)

Kia ora,

Good to see the days getting longer again!

In the June newsletter, you can read about our liaison constable Sarah Steed who accepted a new role in Mana, an update on the On Demand service and news from Wellington Water and WREMO.

Find out about our local organisations, clubs and businesses. There is news from the council and MPs, the regular columns and a *5 minutes with* Tawa Community Board member Tim Davin.

Please keep sending all your news and pictures to newsletter@tawa.org.nz! We love seeing your stories, especially stories that celebrate our local residents!

We hope you will enjoy reading about all the good stuff that is happening in our vibrant community.

Have a good weekend from us all at the Tawa Residents' Association. Our next meeting is on Monday 10th July, 7.30pm at Tawa Squash Club. All welcome!

Monique



See <https://tawa.org.nz> for recent issues.

SERVICE AWARD FOR SARAH STEED

This week the Tawa Community Board, the Business Group and the Residents' Association gathered briefly to acknowledge the significant contribution Constable Sarah Steed has made to the Tawa Community by presenting her with a Tawa Service Award and to wish her all the best in her new role at Kapi Mana policing.

Jill Day spoke on behalf of the Community board to acknowledge Constable Sarah Steed for her service and valuable contribution to the Tawa Community. "Sarah is a very worthy recipient of the Community Board's Tawa Service award. This award is for people in paid employment who go above and beyond and make a significant impact in the community with which they work. Sarah started as the liaison constable for Tawa in November of 2019. This was following the closure of the Police hub in Tawa, a series of incidents in the community and a push by local MP Greg O'Connor to find a way of making sure that the Tawa community had a constable who could support the community with Tawa related policing issues.

As in any community we have had a few issues that have been a bit more complex to resolve and it has made a tangible difference in Tawa having Sarah as our 'go to' person. Sarah has been calm, positive and responsive in her work with the community. Whether it has been working through local issues, supporting the businesses with the occasional incident, the ongoing support for Tawa schools, or attending numerous community events, it is clear that Sarah's mahi has been greatly appreciated."

Below is a message from Sarah:

"After several years being the Police contact point for residents, businesses, and schools in Tawa, the time has come for me to move on to pastures new. I have thoroughly enjoyed my time working in Tawa as the area has such a great community spirit, with so many wonderful people and organisations who want to see the area thrive. It has been my privilege to walk alongside you all.

me around.

I am being replaced by Constable Kalim Tanuvasa-Kelemete (KJ) who is joining our Community Team from a role in response. Hopefully it won't be long before you see KJ's smiley face in and around Tawa."



ON DEMAND BUS UPDATE

Great news for Tawa, the On Demand service is here to stay!
The Transport Committee voted unanimously to give the trial another 12 months as well as extend it into the Porirua CBD, with a view to also include Aotea and Cannons Creek. The bus has been so popular that other neighbourhoods are keen to have their own On Demand as well.



CRYSTAL SHOP MOVING

Healing Light Crystals closes its doors in Tawa on 30 June, off on another wonderful adventure and re-locating to 10 Seaview Road, Paraparaumu Beach. With a much bigger space to evolve in and grow even more.

From Donna: "I want to thank the souls of Tawa for welcoming and supporting my business over the last 10 years, it has been a journey!

I am grateful and blessed in the friendships made that shall continue, the growth of myself personally as well as professionally. It has been a privilege to have been able to educate, support, listen and uplift many a soul that has come through my door for a chat. We never stop learning from each other if we just pause for a moment, observe and listen.

I will miss Tawa greatly and hope to see some familiar faces up the coast!
Many Blessings."



MATARIKI FLAGS

You may have already spotted the new Matariki flags along Main Road. The flags are a great contribution to the vibrant atmosphere in Tawa. After Matariki, they will be followed by flags celebrating the Women's World Cup.



STEAM TRAIN

Did you hear the vintage steam train going through Tawa and Linden recently? It's hauled by AB 608 Passchendaele, named after World War I's devastating Battle of Passchendaele in Belgium. Here it is seen heading back to its depot in Paekakariki up the coast.



Picture credits: Mity Visionz

PORIRUA STREAM CONCERNS

Local Paul Blum recently asked on Neighbourly if people experienced erosion or flooding of their properties due to high levels of water flowing down the Porirua stream in Tawa. He also asked if you are concerned about future events with climate change, the intensification of buildings in the district plan and the lack of mitigation and infrastructure investment to protect the 450 properties along the stream. If you are, you can reply to him on Neighbourly here: <https://www.neighbourly.co.nz/message/view/70050645> with your comments and experiences. If you are interested and living beside the Porirua Stream, you can also request to join their Facebook group here: <https://www.facebook.com/groups/557176089936381/>



WELLINGTON WATER

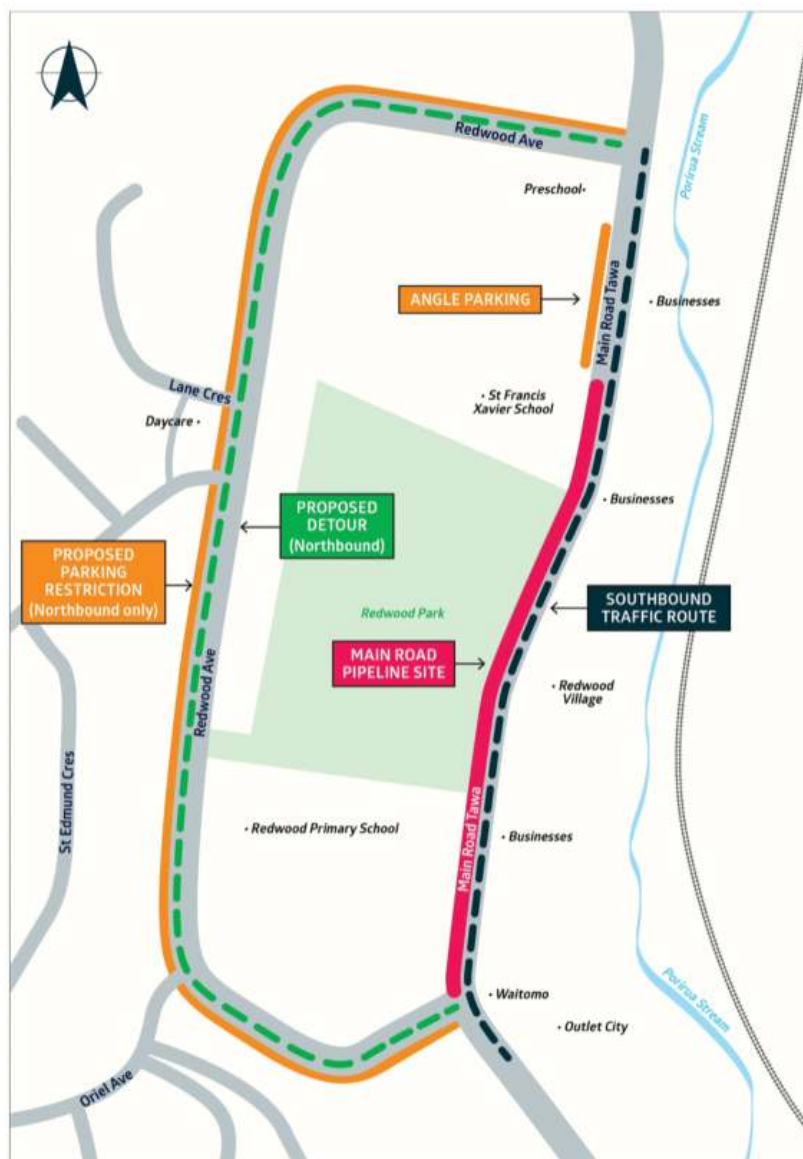
Wellington Water, on behalf of Wellington City Council, will soon begin the construction phase of the first of three projects to improve the performance and resiliency of Tawa's drinking water network. With the aim to reduce the risk of emergency repairs and/or outages, and provide a more reliable water supply for the area, The *Main Road Watermain Renewals* project is set to start in mid July. It involves renewing an ageing section of asbestos cement watermain between 68 Main Road and Redwood Avenue and is expected to take four months to complete.

The northbound lane of Main Road will need to be closed for the duration of the project from 68 Main Road to Redwood Avenue. A detour along Redwood Avenue will be put in place for northbound traffic – as shown on the map (below). Parking will be removed on one side of Redwood Avenue to assist with the traffic flow.

“We acknowledge that Tawa residents and businesses have already tolerated disruption from recent and current works and appreciate people’s understanding as we do this essential work,” says Wellington Water Chief Advisor - Drinking Water, Laurence Edwards.

“We are working closely with the community to minimize the impacts. We have met with St Francis Xavier School and Redwood Primary School, and we are planning to send out more detailed newsletters for parents. These newsletters will give details of how to drop off and collect your children who attend these schools.

understanding as we carry out this essential work on behalf of Wellington City Council."



HISTORY CORNER

Tawa website

The Tawa Residents' Association has recently established a website to provide a range of information about the place we call home. While a fledgling site at present, it will build into a resource of use to residents, students, visitors and even historians in future. It can be found at <https://tawa.org.nz/>

This is not the first time that a "Tawa website" has existed. Over a period of

It became the go-to directory of organisations and their activities in Tawa. It also contains hundreds of photos of events, people and scenery of Tawa through the years and seasons.

The site was also the repository of the online version of Malcolm's *Tawa Community News* monthly newsletter which was emailed to some 1,200 residents of Tawa. In 2021 Malcolm resigned as a Councillor and retired to the Kapiti Coast. In 2022 the website was discontinued. However, the National Library has made an archival copy of the website contents to enable the historic aspects of this site to be preserved. The site can be accessed at www.tawalink.com. Clicking on the "You are entering Tawa" sign gets you into the site proper. The link to the newsletters is beside the **Tawa Community News** heading on the right hand side of the page, near the top.

Save the link as a favourite and you will have many hours of surfing, reminiscing and perhaps some "gosh, I never knew that" moments! Some of the historical images used in this column have been uplifted from the *Tawa Link* site, and probably more will be in future.

The attached image is a screenshot from one of the newsletters in the archives. It's amazing who puts Tawa on their itinerary when visiting New Zealand.

David Parsons

Chairman Tawa Historical Society

Contact David on tawaparsons@xtra.co.nz

PRINCE CHARLES' RECENT VISIT TO TAWA COLLEGE

A big occasion for the school and the Tawa community. Thanks to Olivia Melhop for the photos.



Remember this? Picture from an archived newsletter.

FOTBR PLANTING BEE

were joined by a large group from the Port Nicholson Rotary at the top the Forest of Tawa, Te Ngahere-o-Tawa. Their objective was to plant 400 trees on the grassy hillside before the track meets Meridian Road.

Half of the plants were grown at the Friends of Tawa Bush nursery while the other half were donated by Wellington City Council. And in just two hours, they had done it! It was a perfect day and a great afternoon tea was supplied by Lisa King and Port Nicholson Rotary.

The planting programme will continue for a couple more months, with both mid-week and weekend planting days planned. If anyone is interested in helping for a few hours, please contact Andrew Lily on 021 027 83927.





400 plants planted at Friends of Tawa Bush planting-bee. Picture credits: Paula Mcknight

TAWA COLLEGE MUSICAL

Tawa College presents Be Our Guest: Fables and Fairytales from the best in Musical Theatre!

Join the talented students of Tawa College Under the Sea for a Carousel of sweet soliloquys, dazzling dancing and charming choruses!

This Wicked revue will transport you to a world of fantasy and fancy, from classics like Cinderella and Oliver! to Disney spellbinders like Aladdin and Mary Poppins, to the quintessential shows like Phantom of the Opera and Into the Woods. It's like the West End, but in Wellington!

We can't wait to take you on a trip around fairyland with our live orchestra and renowned singing and dancing. So if you want to see the best and are ready to be impressed – well, please Be Our Guest!

Get your tickets here: <https://events.humanitix.com/murray-cameron>



NEW COURSES U3A

Tawa U3A has launched new courses for the second half of 2023.

These are:

- Cost Benefit Analysis by Professor Martin Lally
- Enduring Power of Attorney
- Law and the Legal System
- The Music of Richard Rogers
- Reading Shakespeare
- Wellington Libraries – Can we help?

The full list of Tawa U3 Courses and Activities can be found on the Tawa U3A Website: <https://www.u3atawa.org.nz/Courses>

The annual subscription is only \$15, and \$25 for a couple. Come along, learn and have fun.



The advertisement features a yellow circular graphic on the right containing the text 'u3a learn, laugh, live' and the TAWA logo. The logo consists of a stylized sunburst above the word 'TAWA'. On the left, there are two circular inset images: the top one shows an elderly woman in a blue sweater sitting in a wheelchair, and the bottom one shows a table with various items including a green bottle, a red and white striped container, and some papers. Text is overlaid on the left side of the advertisement.

Use your free time
ENJOYABLY

**No longer working
full time?**

LOCAL BUSINESS NEWS

Tawa residents Jeff and Jacque Elias are the founders and directors of **Futurebound**. Much more than a mortgage broker, they also offer a mortgage reduction services where they work closely with their clients to "reach financial freedom together". Rebranded as Futurebound in 2019 and just before the Covid pandemic hit, they have created an online business model with most of their team working remotely. However, when a shared workspace fell through and their youngest child started running around the house, they decided it was time to branch out and have an office presence. They are based upstairs at 173 Main Road, Tawa.

Read more on the website here: <https://futurebound.co.nz>



Tawa residents Jeff and Jacque Elias.

Chipmunks Playland Tawa had a garage sale this week. The place will be closed for a few months while they refit it in preparation for the new franchise owners.



Picture credits: <https://chipmunksplayland.co.nz/tawa/>

We urgently need any linen that you may be wanting to recycle. With the cold weather we are currently selling our linen blankets, duvets and sheets as soon as they come in. Any homewares, clothing or accessories will be gratefully received. If you have a car load, please feel free to come around to the back of the shop and come through the door.

Many thanks from Sara and Jannene.



Picture credits: Sara Scott

WREMO

Does your organisation or business have a plan B?

Disruption could come in many forms – a major earthquake, flood, a prolonged power cut or even the sudden unavailability of you or a skilled member of your staff.

Business continuity planning helps businesses identify their core products/services and keep essential functions up and running during a time of disruption. This planning can also be useful for community groups and volunteer organisations to determine if and how they can keep delivering

recovering quickly.

Follow the 12 easy steps in the WREMO business continuity planning guide and template or attend one of our free two hour workshops, online or in-person. Keep an eye on the WREMO event calendar for the next workshop or to send an enquiry.

From Heather McCaskill.



BOOK CORNER

June had an exciting start with the announcement of the Finalists in the NZ Book Awards for Children & Young Adults. The list is a wonderful range of known authors and illustrators through to new authors, including a 16-year-old Kāpiti Coast student.

This year they took feedback from 15 primary, intermediate and secondary schools across Aotearoa to decide on the winners. "Each school was sent a selection of entries from relevant categories, together with review forms and judging guidelines to encourage critical thinking about the books. Their feedback was then shared with the judges." –NZ Book Awards.

We have the Finalist books in-store, along with the [NZBA Finalist Booklets](#), and we'll be reviewing some of them while awaiting the Winners Announcement on

Looking forward to seeing you in-store!
Rowena, Paul, Gaylene, Dana & Sharon

www.tawabooksandpost.co.nz

[Tawa Books & Post; NZ Book Awards for Children & Young Adults Collection](#)
[NZ Book Awards press release](#)



KETE UPDATE

Just a short note this time as we have been very busy planting trees during May! Here are a few impressive stats from *Takapū Community Planting* so far in 2023. You can see that along with our 2022 planted trees, we are indeed growing a forest!

Whanau support hours: 120

Number of volunteer hours: 582

Number of days: 14

Number of sessions with students: 16

Number of buses: 17

Number of trees planted: 4500 plus half of last year's plantings weeded and matted

Number of trees planted (2022) which require releasing: 7500 (over half weeded and matted this year)

We appreciated the sponsorship of our raincoats by *Transpower* – they kept our students warm and dry! A great sense of community and camaraderie was generated by our new KETE hi-viz vests!

Our planting isn't quite finished this season at Takapū Valley. Keep your eye out for our **Tawa Community Planting Day** which is coming up soon and get in touch if you are keen to join us!

Sue Lum, KETE Programme Coordinator

Sue.lum2@wcc.govt.nz

We would love to thank all the following wonderful people for their support:

Wellington City Council - Transpower - Growing Places Charitable Trust - Ngāti Toa Rangatira - Porirua City Council - Te Awarua o Porirua Riparian Management Programme - Conservation Volunteers New Zealand - Friends of Tawa Bush Reserves - Wellington Botanic Gardens educators - Wellington Zoo educators - Mountains to Sea - EnviroSchools - Ngahere Korowai . Greater Wellington Regional Council - Nikau Foundation - Trust House - Lotteries Wellington - Te Rito Gardens



CAROLYN'S GARDEN CORNER

Looking ahead to July, in the garden it is usually a fairly quiet month of outside tasks, unless you are a grower of many roses or apple and pear trees. These are deciduous plants that require pruning during the cooler months when they are dormant. There are many online instructions on how to complete this important job. Don't be scared, just keep in mind the three D's: remove dead, damaged and diseased wood completely.

Always cut on a 45 degree angle about 1cm above an outward facing bud and slope the cut so that water will drain away from it. If you cut too far from the bud, the wood will die back to it, encouraging disease. If you cut too close, you will risk damaging the bud itself. Also take out any branches that are crossing over or rubbing against each other.

Training climbing roses on a horizontal plane will encourage flower buds to form all along the branch rather than just at the top. You can then keep the main branches as the structural form of the plant for years to come, and like you do with apple and pear trees, only prune the side shoots that grow from the main branches. This method not only gives you more flowers, but a pleasing structural form on walls during winter, effectively an espalier plant.



Most of us can expect a degree of frost in the garden this month.

Sitting by the fire on cold, wet days and evenings is even more of a joy for the gardener as it is the time seed and plant catalogues come pouring through our mail boxes, real or virtual. NZ Bulbs, Bulbs Direct and Garden Post all have their lily stocks ready for order, dahlias won't be far behind. The Kings seed catalogue comes out this month with their immense range of flowers, vegetables and herbs. If you haven't grown from seed before, a browse through this catalogue will have you rearing to give it a go.

Now is the time to dream and plan for the gardening year ahead. It all starts now. Have fun with it.



Beautiful Dutch crocus bloom in mid winter.

VIBRANT TAWA

The Vibrant Tawa group has made a huge difference to Tawa over the last 10 years and continues to do so. One of the areas we have had a major influence is upgrading Spring Into Tawa from a plaza only event to a major community fair.

We are involved in many other projects and would love your help. If you are in a position to assist, please contact us on vibranttawa@gmail.com and advise how you would like to assist. Some options are: Annual Family Subscription \$15, Individual Subscription \$15, donations, becoming a committee member, helping with organising the Mexted Motors Spring Into Tawa.

Vibrant Tawa is the trading name for the Tawa residents' association.



TAWA COMMUNITY BOARD

There are two candidates for the **Tawa community board elections** – Liz Langham and Cyrus Ranchhod. The voting papers will be mailed out to electors on Thursday 27 July 2023 and voting will close at 12 noon, Friday 18 August 2023.

You can read about Liz Langham here:

<https://wellington.govt.nz/your-council/elections/2023-tawa-community-board-by-election/liz-langham>

And Cyrus Ranchhod here:

[http:// https://wellington.govt.nz/your-council/elections/2023-tawa-community-board-by-election/cyrus-ranchhod](http://https://wellington.govt.nz/your-council/elections/2023-tawa-community-board-by-election/cyrus-ranchhod)

Please report any **Spicer Landfill odour complaints** on the Porirua Government website, here: https://porirua.govt.nz/services/rubbish-and-recycling/spicer-landfill/spicer-landfill-odour/landfill-odour-complaint-form/?fbclid=IwAR3ferg_NetcTd31beBJd8Er73Uo4qPrb_B-BGIt-O83-QAcjiL0Hdy-Imo

If you have reported a leak already, and you notice the **leak is getting worse**, please report this information also, so the job gets bumped up the waiting list. If you see a water leak, please check here to find out if it has been reported yet: <https://www.wellingtonwater.co.nz/resources/maps/job-status-map/>
If it is not visible on the map, you can report the leak here: <https://services.wellington.govt.nz/report/>

FROM THE COUNCIL

Update from Councillor McNulty

Kia ora Tawa, last month I let you know that speed limits are changing, that is no longer the case (for now) as we go back to the drawing board.

As always, remember that Fixit is available to report any problems to Wellington City Council ([Fixit - Wellington City Council](#)) and feel free to get in touch if you're having any issues dealing with the council (ben.mcnulty@wcc.govt.nz).

Speed Management Plan

management plan consultation.

The feedback coming through was pretty clear that the proposed 30km/h default approach wasn't getting public buy-in so this is a chance to go back to the table and come out with something better. We still have to do (and I strongly support) 30km/h around schools but I think we can take a more nuanced approach to it, rather than one size fits all.

FROM THE BEEHIVE

We encourage our politicians and councillors to reach out to us with news.

From local **MP Greg O'Connor**:

When I first became Ōhāriu MP, one of the first things I was able to achieve for Tawa was to persuade the Kapiti Mana Police to assign a community constable to the area. Constable Sarah Steed has done an excellent job, and while she is about to take up a new position in Police, the good news is that she will be replaced. I wish Sarah well.

As winter settles in, it is nice to have older folk in particular approach me to thank me for the winter energy payment, which often enables them to keep the heating on longer than in the past during our colder months. This has the added advantage of keeping them healthier and freeing up medical services.

It's good to see the Saturday Lions market outside Dress Smart thriving. I notice a few of the now closed Johnsonville market customers there, so it is obviously filling a gap in that market.

Finally, Parliament is a very busy place currently, as all the government departments come to select committees to outline how they will spend their budgets. Also, there is a lot of legislation to be passed before Parliament rises for the election at the end of August.

You can contact Greg with any concerns by emailing greg.oconnor@parliament.govt.nz or calling 477 3332.

From Mana **MP Barbara Edmonds**:

The Government is taking action to reduce the number of young people taking

disposable vapes that are popular among young people. Furthermore, vapes will need child safety mechanisms and those with potentially enticing names will be prohibited, with only generic names being used to accurately describe the product such as 'berry'.

We also want vapes as far from the minds and reach of children and young people as possible, so any locations within 300 metres of schools and marae will be off-limits for new shops.

You can read more on curbing vaping here: <https://www.beehive.govt.nz/release/new-moves-curb-youth-vaping>

Contact Barbara at mana@parliament.govt.nz or 237 9842.



The Beehive is the executive wing of the New Zealand Parliament buildings.

TAWA BID

The job board is updated every week with new vacancies within various businesses and organisations throughout Tawa. If you're looking for a change or a new challenge, check it out: <https://www.tawabusiness.co.nz/jobs>.

TAWA COMMUNITY CENTRE

Our **drama class for tamariki** runs every Monday afternoon during term time here at the centre and is looking for more participants! To enrol or for more information on this or other classes: <https://www.helenogrady.co.nz>

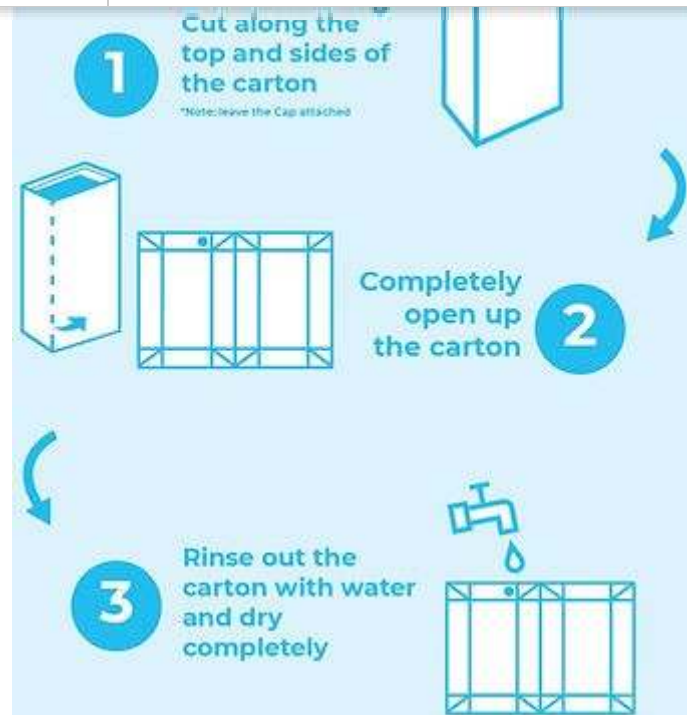
The Tip Shop and Tawa Community Centre want your **ewaste!**

Have you got a bunch of dead cords lying around? Power tools? Or an old video player you don't need? Drop them off for FREE at the Ewaste Collection Popup at the Tawa Community Centre on Thursday July 13, 10am to 4pm.

We'll be accepting small to medium devices and appliances, regardless of condition, for reuse and recycling. This includes computers, laptops, power tools, audio-visual equipment, household appliances such as toasters, heaters, microwaves, vacuum cleaners and more! Find more info [here](#). Note that we cannot accept dehumidifiers, smoke alarms, electric blankets, whiteware, TVs, or monitor screens during this collection. Our experts will also be there to test and tag any electronics you want safety checked and help with software upgrades for a \$5 donation.

For any questions or if you aren't available on this day, contact us at tawacc@wcc.govt.nz or 232 1682 – we may be able to arrange something for you.

Tawa CC have just come on board in conjunction with **TetraPak and Earthlink** to be a drop off point for used beverage cartons. These cartons can be TetraPak or another company. Examples of carton products are plant based milk, custard or juice cartons. We now have a collection bin at the centre for clean and dry cartons that are completely opened up. Lids can stay attached. For details on how to prepare cartons, please see attached photo.



Nohinohi Reorua! Whāngaia tō Tama Toa ki te pānui pukapuka! E toru tekau meneti pakiwaitara, rotarota, waiata hoki i roto i te reo Māori me te reo Ingarihi, nō ngā kōhungahunga me ō rātou mātua kaitiaki.

Get your superhero hooked on books with Nohinohi Reorua — our special bilingual storytimes! Featuring stories, rhymes, and songs in te reo Māori and English, these 30-minute sessions are open to anyone, and are recommended for tamariki aged 2 to 6 with their caregivers. We will be hosting Nohinohi Reorua at the community centre on the last Wednesday of every month at 11am, beginning Wednesday 26 July.

School holidays at Tawa CC – this school holidays we will be hosting a Matariki treasure hunt at the community centre. For more information, get in touch with us or the Tawa Library.





The recycling corner at the Tawa Community Centre and the Swap table.

SPRING INTO TAWA

Spring into Tawa 2023: only 119 days to go!

Planning for Mexted Motors Spring into Tawa on Saturday 28 October is continuing at pace.

Stallholder applications are now open! We've had a huge response already with lots of applications for stall space at the event. The Tawa community is at the heart of our event – and we love having as many of our local schools, groups and organisations part of Mexted Motors Spring into Tawa as possible!

We remind you that applications for stalls need to be in by 16 July – even for local community groups. So please go to our website and fill out the application form: <https://springintotawa.nz/stallholder-info/>

If you apply after 16 July and our spaces are fully allocated at that point, you'll be added to the waiting list.

We're thrilled to have received grants from the Tawa Community Board and the Hutt Mana Charitable Trust to support our event.

We have also welcomed a new Gold Sponsor – Streetwise Coffee Tawa. Our thanks to David for coming on board and supporting our event. Like us, David and team support sustainability. Coffee grounds are donated for use in gardens, they sell reusable cups and offer a 50c discount on hot drinks for

giveaways in the lead up to Mexted Motors Spring into Tawa in October – and an awesome deal on hot drinks on the day of the event.

Remember to stay tuned to our social media for more updates on Mexted Motors Spring into Tawa – www.facebook.com/springintotawa and on https://www.instagram.com/spring_into_tawa/.



Picture credits: Brian Sheppard Photography

TAWA GIRL GUIDING

Tawa Girl Guiding places available for term three

We have places available for girls to join us at Tawa Brownies and Guides in term three! Every term we do heaps of different activities to learn more about the world, help our community, explore the outdoors, and be challenged to try new things.

- Brownies (7 & 8 year olds) meet Thursday 3.45pm to 5.15pm;
Contact Lynsey & Kirstie at browniestawa@gmail.com
- Guides (9 to 12 year olds) meet Thursday 5.30pm to 7pm;
Contact Jess at jessicaslonguiding@gmail.com

All the units meet locally in central Tawa. Fees for all ages are \$90 per term. If



Picture credits: Katrina, GGNZ Rangituhi Local Coordinator

INNER WHEEL TAWA

The Inner Wheel Club of Tawa held their 6th annual 'mighty' quiz night on Sunday 28 May. Thanks to the over 100 players and generous local businesses, \$2,111 was raised for the Tawa Community Patrol.

The Inner Wheel Club of Tawa would like to thank all our wonderful sponsors and local businesses who donated fantastic prizes for our raffles and auction including New World Tawa, The Borough, Collective Real Estate, Paisley Gifts, Lowe and Co Real Estate and Guardian Funeral Home Johnsonville and Tawa.

Inner Wheel Club of Tawa also held its changeover on Wednesday 21 June, which marks the end of the Inner Wheel year and all we have achieved in the local Tawa Community and wider. Members, partners, family, friends and representatives from Tawa businesses who have supported us over the past year celebrated the evening. Brodie Vernon, Co Trustee of Tawa Youth and Family Trust, received a donation of \$1,000 from Tawa Inner Wheel who also

We believe money raised in the Tawa community is given back to local Tawa charities, which is why we support Tawa Youth and Family Trust and Tawa Community Patrol each year, as well as over the past year toys for local children for Christmas through the Tawa Foodbank. Through our Inner Wheel connections we have also supported appeals for weather events in Auckland and Cyclone Gabrielle as well as supported refugees settling in New Zealand, Riding for the Disabled and Little Miracles and collecting toys for local children for Christmas through the Tawa Food Bank.

The club is looking forward to the incoming year. May 2024 International Inner Wheel will celebrate their 100 years of an international women's Service Organisation. Tawa Inner Wheel has been serving the local community for 42 years.

Want to find out more about Inner Wheel and how we support the community? Come and find out more about Tawa Inner Wheel – join us on Saturday 8 July, 4pm at The Borough. We welcome new members. Email carolynjcrutch@gmail.com for more information.



TAWA ROTARY CLUB

Tawa Rotary Club is a dynamic group who like doing projects to benefit the community and have fun along the way. Everyone is welcome. For more



You can still drop off winter pyjamas at the New World.

SPORTS

There are lots of activities happening at **Wellington North Badminton** at 24 Taylor Park!

- Pickleball is a cross between tennis, table tennis and badminton. We play

the world!

- Women's and girl's badminton sessions are on every second week at Nairnville Recreation centre. A great chance to learn to play or get back into badminton in a safe and supportive female only environment. Heaps of fun too!
- Adult badminton lessons are held on Saturdays from 1pm to 3pm. Want to brush up on your skills or learn some new ones? This is the class for you. Check out our website for more info: <http://www.wnba.org.nz/learn/adult/>
- Shuttle time classes for kids – a super fun and easy way for kids to learn to play and love the great sport of badminton. During term time every Tuesday and Thursday after school. More info at <https://www.wnba.org.nz/learn/junior/>.



Tawa Titans Hockey have their annual quiz night on 18 July, 6.30pm at The Borough.

Tickets are \$10 per person, you can pay on the night or contact them on Facebook here: <https://www.facebook.com/events/688555889714945/?ref=newsfeed>

- Teams of 6. Either register with us (our DMs are open) or come along and join in with someone else (also encouraged – let's make new friends!)
- Prizes to be won on the night!



SHORT NEWS AND EVENTS

From Wi Awatere Te Tau on the community Facebook page: "Sorry all neighbours of Wilfred Street and surrounding streets for the car horn. My mother dropped off a car and put the steering wheel lock in (not properly) and it has pressed against the car horn. She didn't leave us the keys. Sorry for loud disturbance so early in the morning. Hope you all have a great day."



Tawa local Stephen Mulholland was featured recently. He normally takes a llama out for a walk around 2pm. Have you seen them around?

Picture credits: WCC



Enjoying Woodburn Reserve. Picture credits: Caillie Evans



A Matariki yarnbomb was added to the fence at the Countdown roundabout.



Parents for Climate Aotearoa are hosting a free workshop on Saturday 1 July, 1pm at Tawa Community Centre. Let's Talk Climate aims to equip you with the skills to have good conversations about climate change. You can register here: <https://events.humanitix.com/let-s-talk-climate-in-tawa>



English Dhaba (located at the Linden Shops) has just won the "Best Takeaway" award in Wellington. Congratulations! Find their menu



Train station on a lovely day. Picture credits: Amelia Ruscoe



First sign of spring!



Willowbank Reserve. Picture credits: Mity Visionz



Isn't this the cutest, greenest letterbox in Tawa?

DID YOU KNOW...

Did you know about the amazing charity Endo Warriors Aotearoa? Endo Warriors Aotearoa aims to raise awareness and provide education about endometriosis and menstruation. Their goal is to improve the support and medical care available for those affected by Endometriosis (Endo) and to combat period poverty in our community. They provide free period products to those in need and offer period education in schools. Through donations (both physical and financial), they source items for their surgery care boxes and provide support and resources for individuals and whānau. Read all about what they do here: <https://www.endowarriorsaotearoa.com>



5 MINUTES WITH TIM



5 minutes with Tim Davin

Can you tell us something about your life growing up?

I lived most of my childhood in Johnsonville in the 1950s – at a time when they used to herd sheep along Moorefield Road to the stockyards at the Johnsonville Railway Station. You can just imagine the terrible mess they made of the road.

I went to Engineering School in Christchurch. I subsequently worked in local government engineering most of my working life – with 15 years at the Porirua City Council.

My wife and I brought up 4 children and lived in Tawa for the last 33 years.

What is unusual about our family is that we had two sets of twins – four years apart – so you can imagine we had some very busy years. I am fortunate that all my children and grandchildren live in Wellington. I am now retired and am a widower.

What can you tell us about your current daily life?

Since retirement, in addition to the Tawa Community Board I joined several community

organisations – Rotary, U3A Tawa, the RSA and Probus.

I keep active by playing table tennis and pétanque with U3A Tawa, I swim at Tawa pool, and I enjoy golf. When the season is right I also enjoy trout fishing and skiing. My skiing days are becoming limited – some of my mates are pulling out and snow is now becoming a rare commodity!

What do you like about Tawa?

What I now realise about Tawa – particularly since I retired – is it that it has a real village

atmosphere. Whenever I am around the shops, library etc. I always seem to meet someone I know.

On the Tawa Community Board, I understandably have a strong interest relating to transport, roads, and the Porirua Stream etc., but I am also benefitting from an increased understanding of the broader social issues in Tawa.

I am a very social type so I might you around sometime?

NEXT TRA MEETING

The Tawa Residents' Association monthly meetings are open to the public. The next meeting will be on Monday 10th July. Feel free to come along! We are always open to new people joining the committee, helping out, or sharing ideas.

We meet upstairs at the Tawa Squash Club on the second Monday of the month, 7.30pm.

We look forward to meeting you!

Elizabeth, Jackson, Monique, Miriam, Peter, Richard, Susan & Tony



Monique
The Tawa Residents' Association