

## Abel Tasman Coast Track repair update



### Newsletter two – 30 September 2022

*This newsletter is the second of a series of updates for community members, concessionaires and other stakeholders on the progress of repairs to the Abel Tasman Coast Track Great Walk after the severe rain event in August 2022.*

Kia ora koutou

We are aware of the impact the partial closure of the Abel Tasman Coast Track may have on your businesses and activities and the importance to you of having the track fully operational again, particularly as we approach the main visitor season.

Work is progressing on repairing damaged track sections and more information on this is provided below. Our DOC staff and contractors are working as hard as they can to restore the full Coast Track experience as soon as possible.

Beaches, huts, and campsites have continued to be accessible by boat and kayak. Visitors are still able to enjoy the Abel Tasman coast, with some choosing to do a mix of walking the Coast Track and going by water taxi, cruise, and kayak.

We are working with Nelson Regional Development Agency (NRDA) and Tasman District Council (TDC), alongside our Abel Tasman operators, to promote the Abel Tasman Coast Track as open. Some temporary alterations have been made to concession contracts to allow for water taxi transport outside of the normal concession conditions and further options are being investigated.

## Coastal Classic trail run on

The Nelson Events Abel Tasman Coastal Classic trail run will be held as planned on 8 October, but with a few route changes. This event will help show the park coast and track can still be accessed and activities are continuing. Post-event media coverage will show the park as open and as beautiful as ever.

The northern end of the park is fully open, from Onetahuti to Wainui.

Tasman District Council has now opened road access to Wainui, Tōtaranui and Awaroa. Please check the [Tasman District Council website](#) for all road status information.



*Above: 'New view' from new section of track in the Astrolabe*

## Progress

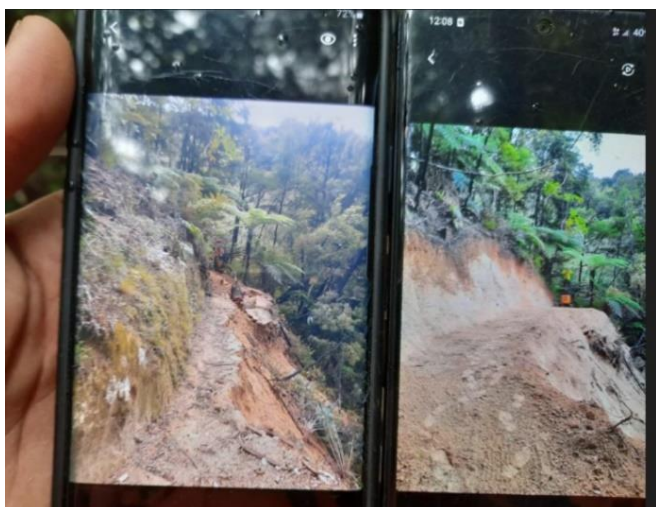
### Coquille Bay to Anchorage/Inland-Coast Track Junction

Contractors are quickly working through the Astrolabe section of the track. Work is now well underway with contractors operating in multiple locations. Additional geotechnical assessment identified further damage once the track/slips had settled, and a new track route is needed which cuts off Gilbert Point.

The work is complex, including relocation of the Horopu Bridge. DOC is working towards getting the track to a suitable walking standard before opening this section to the public.

Time frames for completion: (weather dependent):

- Coquille to Apple Tree - approximately 3 weeks.
- Apple Tree to Observation Beach - approximately 10 days.
- Observation Beach to Anchorage - approximately 6 weeks- the major delay for this section is the need to move the Horopu Bridge inland and ensure suitable and safe for walkers.



*Above: Before and After of track repair work in Astrolabe.*



*Right: Horopu Bridge assessment.*

## Medlands to Bark Bay

The route between Medlands and Bark Bay has been marked and geotechnical analysis is currently being undertaken. We are working through these processes as quickly as possible; the proposed track line will be cut this week. A large digger currently working in Bark Bay is to be redeployed shortly to remove slip debris at northern entrance of the track. This re-route will not initially be of a Great Walk standard - the aim is to get this section of track open as soon as possible, due to its popularity with visitors. Improvements to the track standard will follow later.



## Tonga Quarry to Onetahuti

The new route between Tonga Quarry and Onetahuti has been marked out. Our DOC team will start clearing the vegetation along the new route next week and a contractor will be scoping the excavation work. Work on the new track route will commence within the next month, but we are unable to give a clear timeframe for completion- a very approximate 6 weeks



## Anchorage to Torrent Bay

The high tide track between Anchorage and Torrent Bay has a significant slip just south of the Torrent River bridge, and smaller slips both on the Torrent Bay side and the Anchorage side of this high-tide track. Further geotech analysis is needed to determine whether a track can be re-established around the larger Torrent River slip, or what other engineering solutions may be feasible. For example, a new suspension bridge may be required to span the Torrent River and eliminate the need to cross this hazardous slip.

No timeframe has yet been established for repairing this section, with a full high tide track option unlikely to be available over the peak

summer season. However, a poled route to ford the Torrent River is likely to be marked out once the remaining slips and slumps on the high tide track have been cleared. This should be up and running by the end of November, including access to Cleopatras Pool. This would extend the time this section could be crossed to possibly 3-4 hours either side of low tide, but would still require fording the Torrent River by foot. In the meantime, the Torrent Bay estuary can be crossed within 2 hours either side of low tide.



*Images from top to bottom: Slip Medlands to Bar; Slumping in track Tonga Quarry to Onetahuti; Slip by Torrent River Bridge.*

## Open and closed track sections

Below are the current open and closed sections of the Coast Track, also shown on maps below.

### Open

- Mārahau to Anchorage inland route - experienced trampers can use a diversion via the Inland Track. This has steep gradients and uneven surfaces; a 6-hour timeframe should be allowed between Mārahau and Anchorage
- Pitt Head loop track
- Low tide crossing Anchorage to Torrent Bay
- Torrent Bay to Medlands Beach
- Bark Bay to Tonga Quarry
- Onetahuti to Wainui

### Closed

- Coquille Bay to Anchorage (Coast Track)
- High-tide track Anchorage to Torrent Bay, including Cleopatra's Pool Track
- Bark Bay Hut to Medlands Beach
- Tonga Quarry to Onetahuti

## Maps

The maps below show the Abel Tasman Coast Track sections that are currently closed (marked in red). These maps will be updated as sections re-open. Links to these maps can be found in the alert on [the Abel Tasman Coast Track](#) page on our website.

### Coquille to Anchorage:



## Bark Bay to Medlands:



## Onetahuti to Tonga Quarry:



## Contact us

This newsletter is being sent by email to mana whenua iwi, community members, concessionaires, local businesses, and other stakeholders with an interest in the Abel Tasman Coast Track and Abel Tasman National Park. It is produced by the DOC Motueka team.

We hope you find the content useful, and we aim for it to reflect and respond to your questions and concerns. If you have feedback, suggestions for what could be included in future newsletters, or others that may want to be added to the distribution list, please contact us at [hforsey@doc.govt.nz](mailto:hforsey@doc.govt.nz)